

Table of Contents

Wetland Delineation Report.....	1-6
--	------------

Appendices

Appendix 1: Figures

Figure 1:	USGS Topographic/Site Location Map
Figure 2:	Wetland Boundary Map
Figure 3:	NRCS Soil Survey of Milwaukee County
Figures 4A-C:	Aerial Photographs (2000, 2005 & 2010)
Figure 5:	Wisconsin Wetland Inventory Map
Figure 6:	SEWRPC Environmental Corridor Map
Figure 7:	Advanced Hydrologic Prediction Service 90-day Departure from Normal Precipitation Map

Appendix 2: Site Photographs

Appendix 3: Wetland Determination Data Forms – Midwest Region

Appendices

Appendix 1: Figures

Appendix 2: Site Photographs

Appendix 3: Wetland Determination Data Forms – Midwest Region

Appendix 1: Figures

Figure 1: USGS Map/Site Location Map

Figure 2: Wetland Boundary Map

Figure 3: NRCS Soil Survey of Milwaukee County

Figures 4A-C: Aerial Photographs (2000, 2005, 2010)

Figure 5: Wisconsin Wetland Inventory Map

Figure 6: SEWRPC Environmental Corridor Map

Figure 7: 90-day Departure from Normal Precipitation Map

WETLAND / WATERWAY EXHIBIT

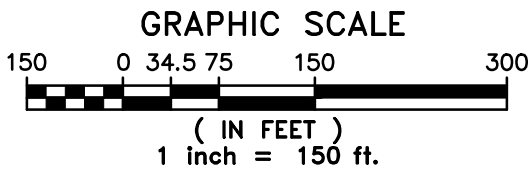


WETLAND BOUNDARY SURVEYED BY MC CLURE ENGINEERING
2010 AERIAL PHOTO SOURCE: SOUTHEASTERN WISCONSIN REGIONAL PLANNING COMMISSION

LEGEND

- DATA SAMPLE POINT
- WETLAND FLAG
- WETLAND BOUNDARY

Figure 2. Wetland/Waterway Boundary Map
Southbrook Church
City of Franklin
Milwaukee County, WI



R.A. Smith National, Inc.

Beyond Surveying
and Engineering

16745 W. Bluemound Road, Brookfield WI 53005
262-781-1000 Fax 262-797-7373 www.rasmithnational.com
Appleton, WI Orange County, CA Pittsburgh, PA

H:\1120163\Dwg\12040E1_RASN.dwg\WX111B40
12040E1_RASN.dwg\WX111B40
SHEET 1 OF 1





Figure 4A
2000 Aerial Photo Map
Southbrook Church
City of Franklin
Milwaukee County, WI

Data Source:
Southeastern Wisconsin
Regional Planning Commission

0 150 300

1 inch = 300 feet



R.A. Smith National
*Beyond Surveying
and Engineering*



Figure 4B
2005 Aerial Photo Map
Southbrook Church
City of Franklin
Milwaukee County, WI

Data Source:
Southeastern Wisconsin
Regional Planning Commission

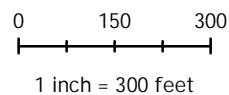




Figure 4C
2010 Aerial Photo Map
Southbrook Church
City of Franklin
Milwaukee County, WI

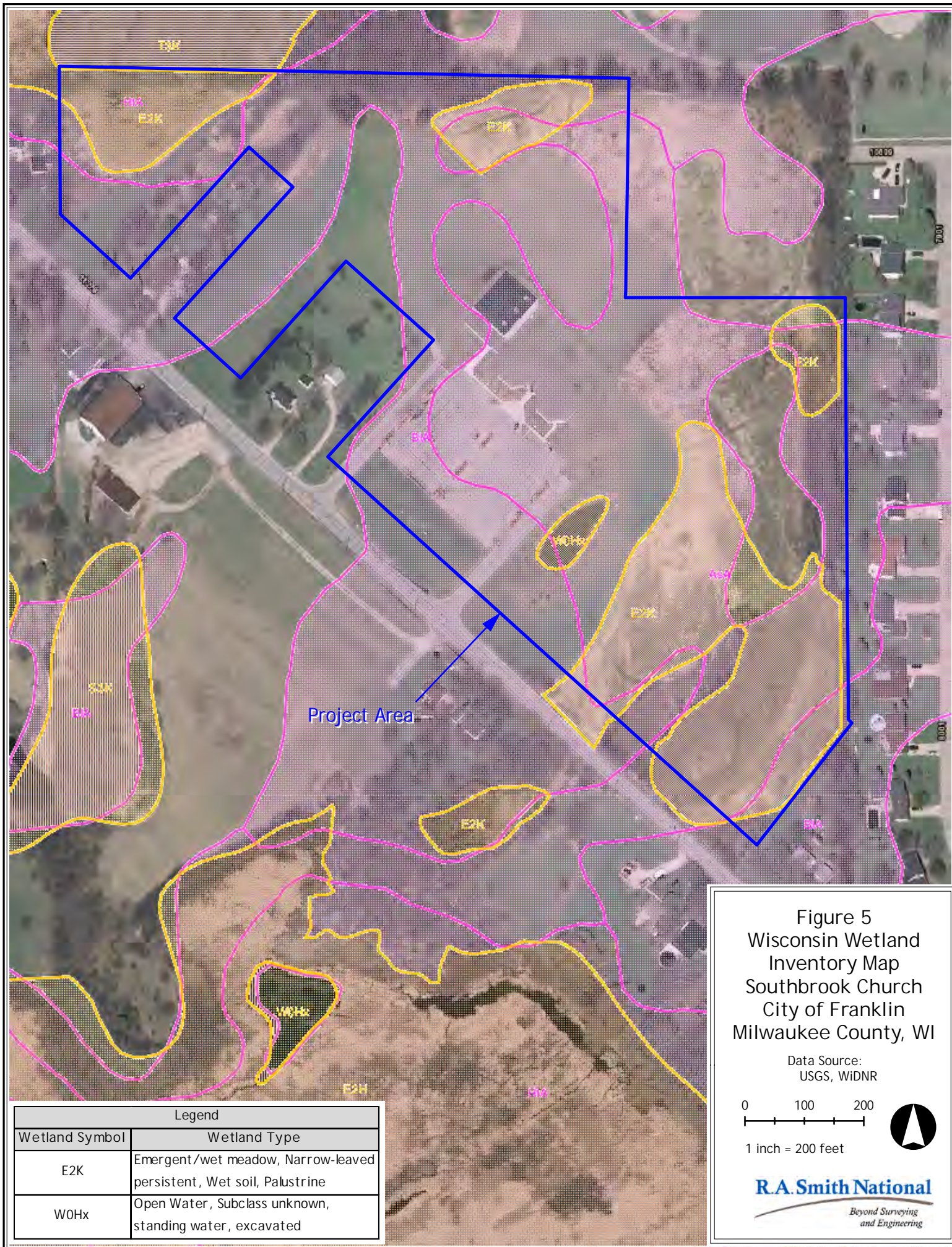
Data Source:
Southeastern Wisconsin
Regional Planning Commission

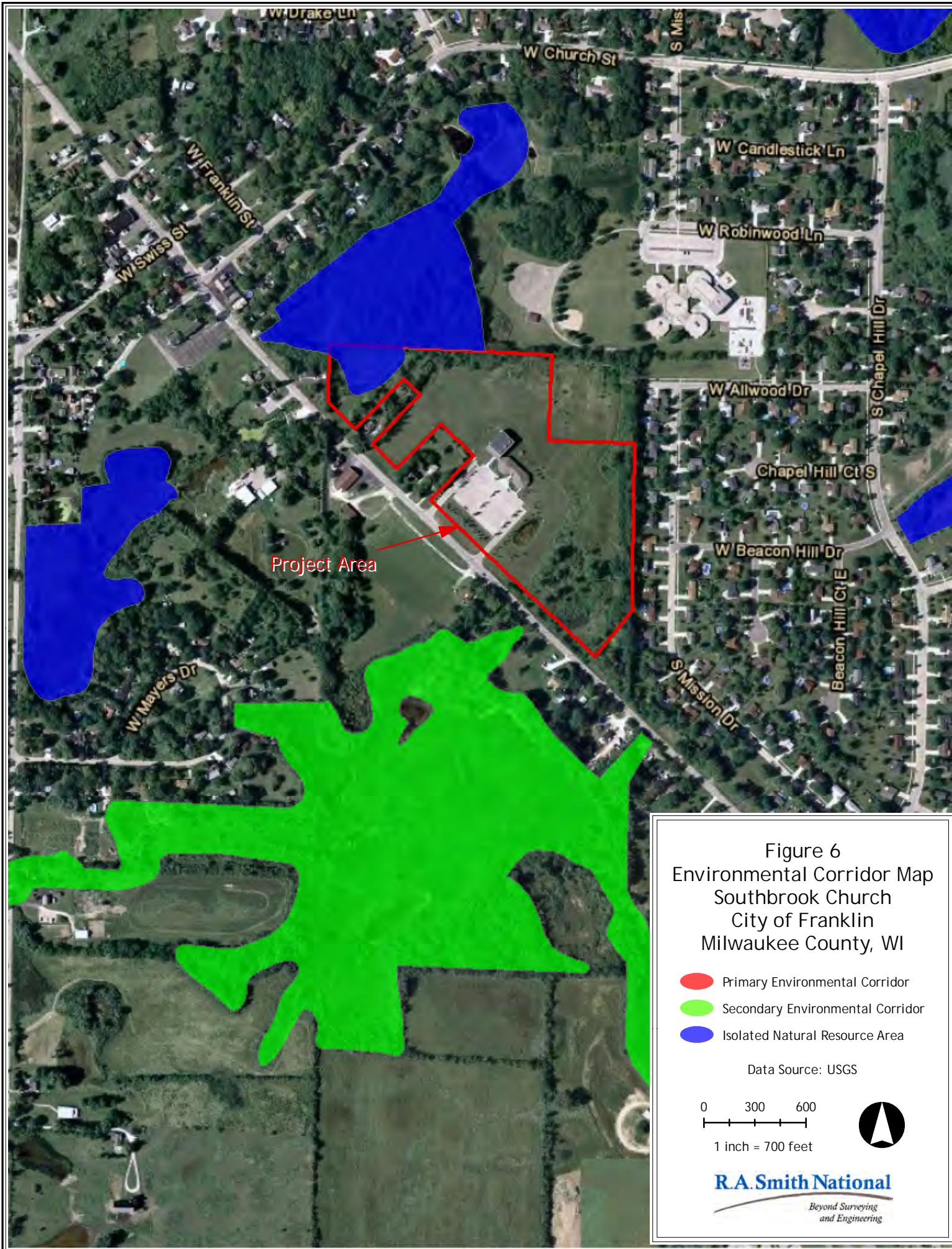
0 150 300

1 inch = 300 feet

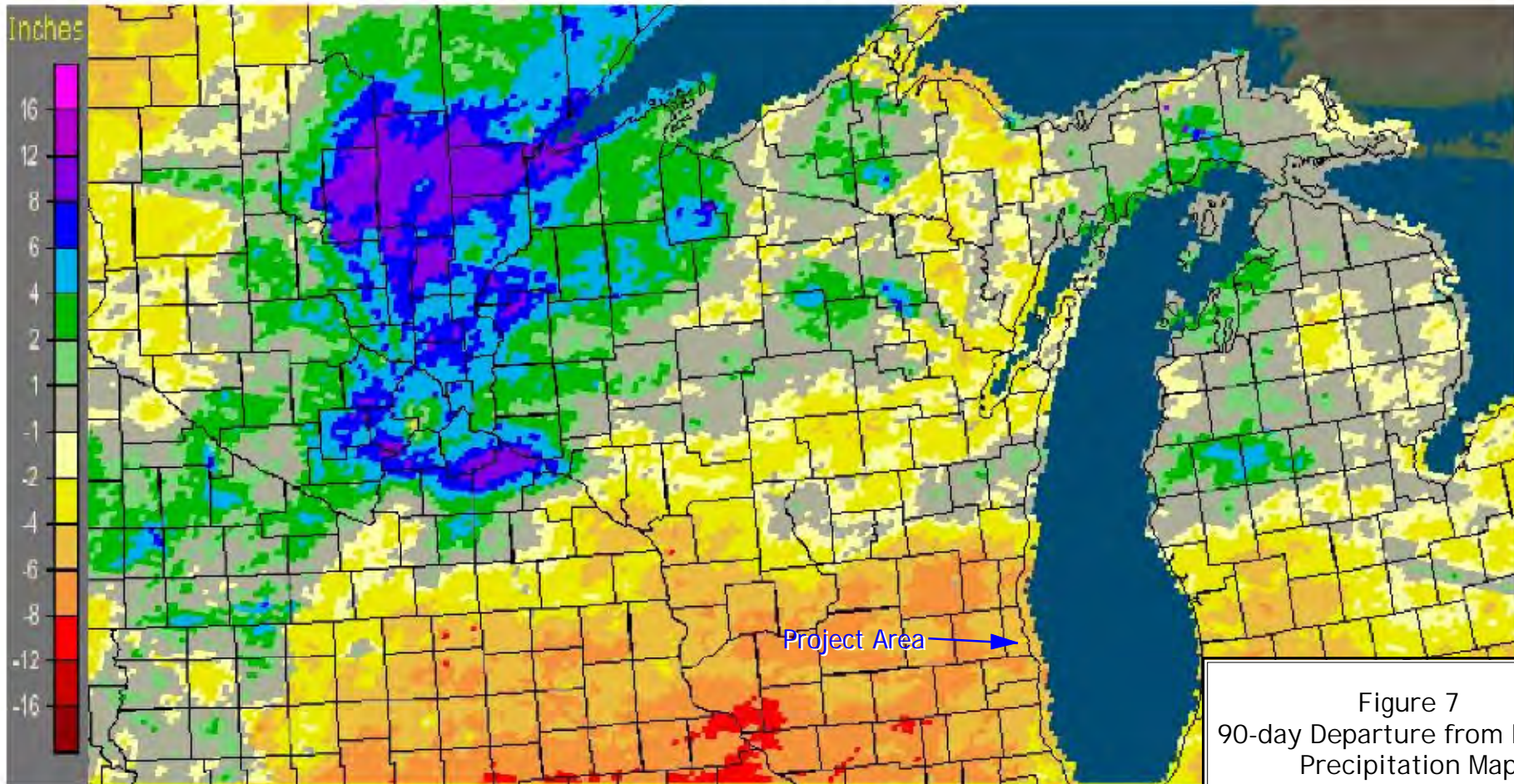


R.A. Smith National
*Beyond Surveying
and Engineering*





Wisconsin: Current 90-Day Departure from Normal Precipitation
Valid at 7/23/2012 1200 UTC- Created 7/23/12 14:17 UTC



The project area falls within
-4" to -6" of the normal
precipitation range.

Figure 7
90-day Departure from Normal
Precipitation Map
Southbrook Church
City of Franklin
Milwaukee County, WI

Data Source:
USGS, NOAA AHPS website

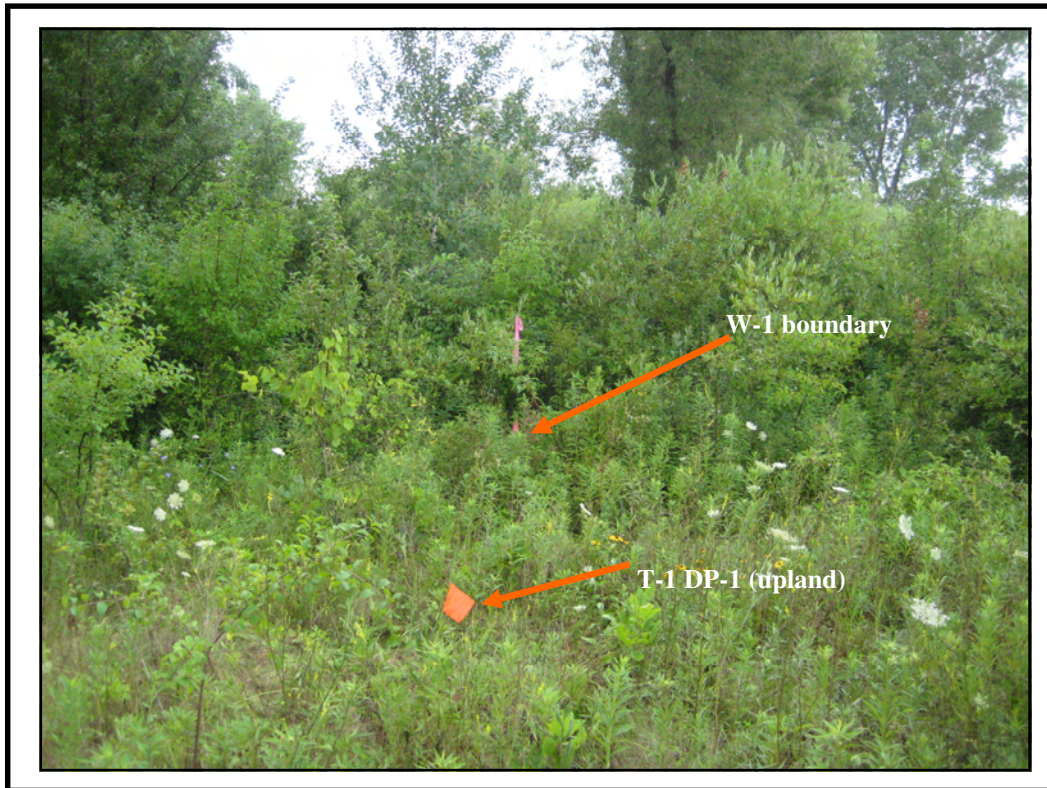
NOT TO SCALE



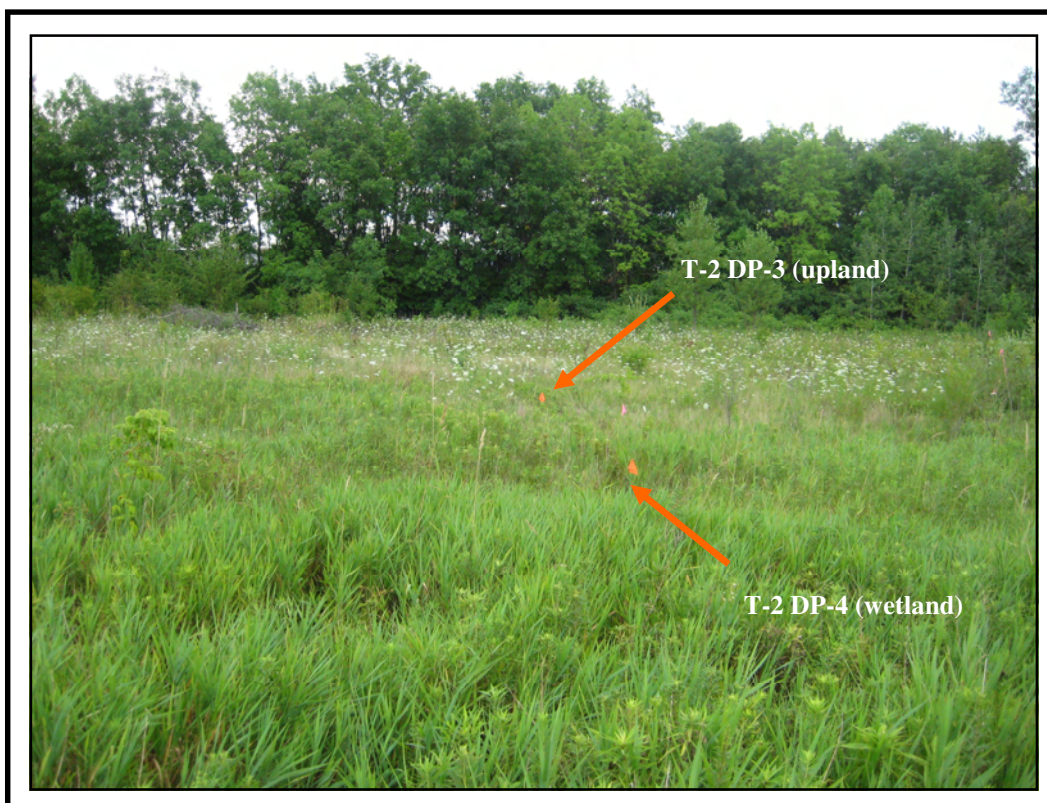
R.A. Smith National
*Beyond Surveying
and Engineering*

Appendix 2:

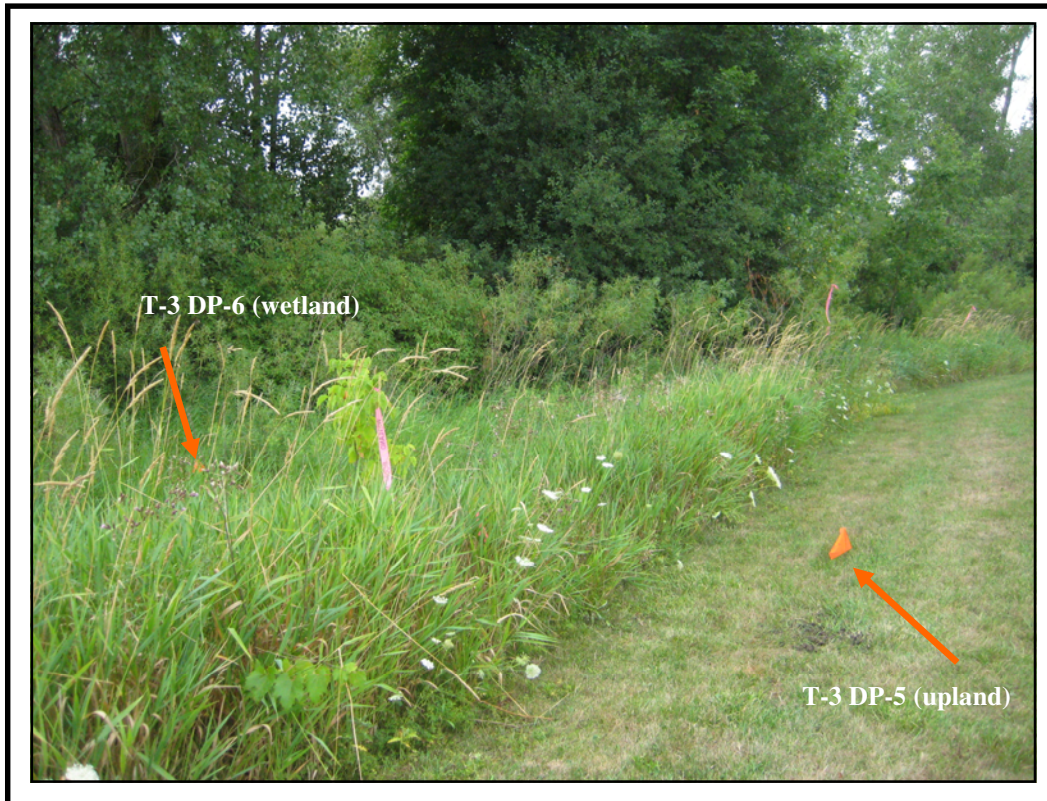
Site Photographs



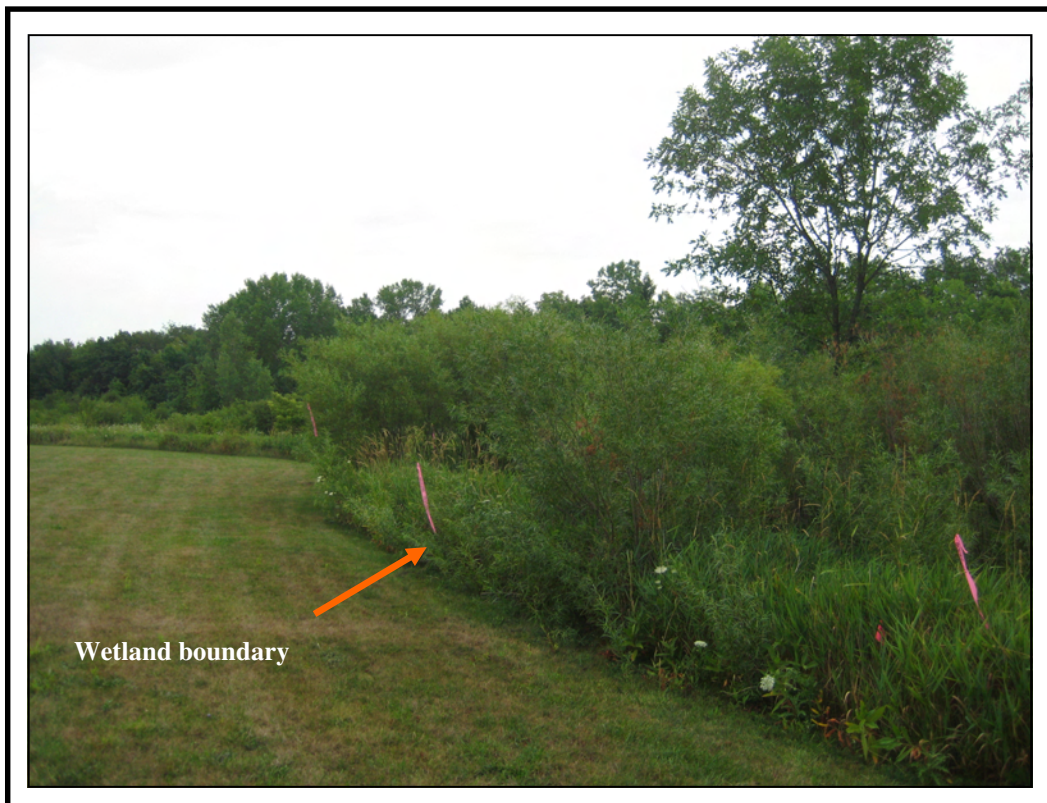
Photograph 1 (7/24/2012): South facing view of T-1 towards W-1.



Photograph 2 (7/24/2012): East facing view of Transect 2 near northwestern portion of W-1.



Photograph 3 (7/24/2012): South view of Transect 3 along the western boundary of W-1.



Photograph 4 (7/24/2012): North facing view of the western boundary of W-1.



Photograph 5 (7/24/2012): Interior view of the northeastern portion of W-1.



Photograph 6 (7/24/2012): Facing northwest along W-1 boundary from T-1. Shrub carr wetland is left of the flag and upland "old-field" is to the right.



Photograph 7 (7/24/2012): Northeast view of interior of W-1 from the southeast portion of W-1. Note the shallow marsh community in the background.



Photograph 8 (7/24/2012): Upland peninsula within W-1. Shrub carr wetland is in the background and upland prairie remnant is in the foreground.



Photograph 9 (7/24/2012): South facing view of the stormwater pond that was built in 2002 during the construction of the church. The stormwater pond is exempt from NR103 regulation.



Photograph 10 (7/24/2012): South facing view of a typical upland plant community within the site. Uplands are dominated by cool season grasses and Queen Anne's lace. W-1 is in the background.