

Comprehensive Outdoor Recreation Plan (CORP) Update

Available at www.franklinwi.gov

Email Questions to: generalplanning@franklinwi.gov

Or Call: 414.425.4024



CORP Update Next Steps:

- Parks Commission Meeting: Tonight at 8:15 P.M.
- Parks Commission Meeting to review and consider recommendation of the draft Plan: early February
- Plan Commission meeting to review and consider recommendation of the draft Plan: mid to late February
- Public Hearing / Initial Common Council Consideration of the Final Draft Plan: March 1

Status of Implementation of the 2002 CORP

Conditions in 2002:

32 Existing Parks

(13 City, 12 County, 7 School)

- 3 Existing Trails (2 City, 1 County)

Conditions in 2010:

36 Existing Parks

(17 City, 12 County, 7 School)

- 5 Existing Trails (3 City, 2 County)



Improvements to City-Owned Parks Since 2002*:

Lion's Legend Park Phase I Two Sand volleyball Courts, Play Structures, Grills and Prep Tables (2011)

Lion's Legend Park Phase II: Play Equipment/Play Structures, 1 Baseball Diamond, 2 Tennis Courts, 1 Outdoor Pavilion, 4,267 lineal foot Paved Walking Trail, Grills and Prep Tables, 53 stall Paved Parking Lot

Jack E. Workman Neighborhood Park: Play Equipment/Play Structures, 1 Volleyball Court, 1 Softball Field, 1 Basketball Court, 1 Wood Pedestrian Bridge, 1,458 lineal foot Paved Walking Trail, Wetland Mitigation

Christine Rathke Memorial Park: Play Structures

Friendship Park: 1 Play Structure, 1 Shade Kiosk, 490 lineal foot Paved Walking Trail

Glen Meadows Park : 1 Play Structure

Franklin Woods Nature Center: Play Equipment/Play Structures, 2,072 lineal foot paved Walking Trail, 2,096 Stone Walking Trail, 4 Informational Kiosks, 1 grass play field, 26 stall Paved Parking Lot.

Ernie Lake Park: 3,777 lineal foot Paved Walking Trail

Mission Hills Neighborhood Wetlands: 1 Grass Play Field

Market Square: 1 Gazebo, 12 stall Parking Lot

Dr. Lynette Fox Memorial Park (New): Play Equipment/Play Structures

Ken Windl Park (New): Play Equipment/Play Structures, 1 Indoor Pavilion with a kitchenette, 2 Tennis Courts, 1 Shade Kiosk, 29 stall parking lot, access to City of Franklin Bike and Hiking Trail

Tifton Woods (New): Woodlands

Victory Creek (New): Natural Area

**Dog Stations, Park Benches, Picnic Tables, Garbage Cans and Bike Racks were added to many of these parks since 2002, but are not listed above.*

County Owned Park Improvements Since 2002:

Oak Leaf Trail: 3.4 Mile expansion, construction of 4 bridges, construction of 2 parking lots

Milwaukee County Alpha Mountain Bike Trail – Whitnall Park/Crystal Ridge (New): Construction of a 3.0 mile trail connecting the Winter Sports Area of Whitnall Park in the Village of Greendale to the Crystal Ridge area of the Root River Parkway in the City of Franklin.



Oak Leaf Trail

Major Recommendations of the CORP Update:

- Acquire and Develop a 200-acre Central Park
- Acquire a 6.25-Acre Site for a Community Recreation Center Building
- Construct 7 New Trails (6.45 miles)
- Develop 1 Existing Neighborhood Park at an Elementary School Site
- Acquire and Develop 2 Neighborhood Parks
- Acquire and Develop 5 Mini Parks
- Acquire and Develop 1 Special Park



Proposed Oak Leaf Trail Construction Timeline (per SEWRPC):

- Construction of the Oak Leaf Trail from Ryan Road to Oakwood Road: 2013 - 2014
- Construction of the Oak Leaf Trail from Oakwood Road to 27th Street: 2014
- Construction of the Oak Leaf Trail from the Root River Parkway 0.5 miles south of College Avenue Extended to Forest Home Avenue: 2013 - 2014
- Construction of the Oak Leaf Trail along the Ryan Creek Corridor from South 76th Street to South 116th Street: 2014



Proposed Safe Routes to School Construction

Timeline:

- Development of a Safe Routes to School Plan for Pleasant View Elementary School: 2011



Proposed Major Roadway Reconstruction Timeline (per SEWRPC):

- 76th Street (with additional traffic lanes, and sidewalk on east side) from Puetz Road to Imperial Drive: 2013 - 2014
- College Avenue (with sidewalks) from 27th Street to 51st Street: 2014
- Hwy 100 (with sidewalks) from Root River to St. Martins Road: 2015
- 27th Street (with sidewalks) from College Avenue to S. County Line Road: 2015



EXECUTIVE SUMMARY

Introduction:

This report is an update of the City of Franklin's previously adopted park plan entitled Comprehensive Outdoor Recreation Plan: 2020 for the City of Franklin, Milwaukee County, Wisconsin, dated February 2002, prepared by Meehan & Company, Inc. (commonly referred to as the 2002 CORP). As an update, this report is intended to guide the City's park, open space, and outdoor recreation site and facility acquisition and development efforts to the year 2025, and in certain instances, beyond.

This Comprehensive Outdoor Recreation Plan -- or CORP -- update is designed to address projected and prioritized needs in a detailed fashion for the next five years (to the year 2015) and in a generalized fashion for the next 15 years (through the year 2025), with progress reviews annually and a more extensive review and/or update ideally every five years. An up-to-date and adopted CORP is required by the Wisconsin Department of Natural Resources in order for communities to be eligible for participation in most cost sharing (grant) programs. The CORP update has also been incorporated by reference into the City's Comprehensive Master Plan.

A Comprehensive Outdoor Recreation Plan is a fundamental tool utilized in the acquisition and development of a sound public park, open space, and outdoor recreation system and is a key element of community planning. The City of Franklin has recognized this fact, as evidenced by its adoption of the City of Franklin Comprehensive Master Plan, dated August 1992, prepared by Lane Kendig Inc. (which included a park and open space chapter intended to serve as the City's first park plan), and by its adoption and ongoing implementation of the previously noted 2002 CORP.

Executive Summary

Introduction (*cont.*):

Diligent implementation of this plan over time will assure the consistent, cost-effective, and coordinated provision of parks, open space, and outdoor recreation opportunities for both the residents of, and the visitors to, the City of Franklin. A Comprehensive Outdoor Recreation Plan is a fundamental tool utilized in the acquisition and development of a sound public park, open space, and outdoor recreation system and is a key element of community planning. The City of Franklin has recognized this fact, as evidenced by its adoption of the *City of Franklin Comprehensive Master Plan*, dated August 1992, prepared by Lane Kendig Inc. (which included a park and open space chapter intended to serve as the City's first park plan), and by its adoption and ongoing implementation of the previously noted 2002 CORP. Conscientious implementation of this plan will also help assure the continued protection and preservation of the most important natural resource features of the City, will help sustain the City's suburban character, and will help promote the continued health, beauty, and overall well-being of the City and its residents. Particularly note-worthy is this plan's efforts to continue to establish a city-wide inter-connected recreation corridor/trail/open space system comprised of:

- The Root River and its associated floodplains, wetlands, woodlands, and Primary Environmental Corridor;
- Many of the City's smaller streams and their associated floodlands, shorelands, and Secondary Environmental Corridors;
- Some of the City's isolated woodlands and wetlands and their associated linkages and Isolated Natural Resource Areas; and
- Most of the City's existing, and proposed parks, trails, paths, and sidewalks.

Executive Summary

Introduction (*cont.*):

The importance of this Comprehensive Outdoor Recreation Plan to the overall quality of life within the City of Franklin cannot be overemphasized. *Implementation of the CORP update would, over time, provide an integrated system of parks, open spaces, and trails within the City that would not only serve to preserve and enhance the City's natural resource features, and suburban character, but would also provide a wide range of wholesome outdoor recreational activities close to home.* However, this CORP update also recognizes that its implementation is dependent upon the availability of increasingly limited financial resources, and therefore, certain recommendations may not be able to be achieved within the time-frame of this Plan.



Executive Summary

Population Projections & Forecasts:

The City of Franklin is a suburban community with a multitude of recreational needs based upon both its current population and projected year 2025 population. The analysis and establishment of reasonable population projections and forecasts have significant importance in guiding and properly targeting the City's recreational needs through the year 2025, and beyond.

As set forth in Chapter 2 of the Comprehensive Outdoor Recreation Plan update, staff used U.S. Census, Wisconsin Department of Administration (DOA), and Southeastern Wisconsin Regional Planning Commission (SEWRPC) data to update population projections and forecast data to the year 2025 and beyond. Of particular note:

- The DOA population estimate for the City of Franklin for the year 2010 is 33,900 persons. This represents an increase of 4,406 persons or 14.9 % from the year 2000 Census population of 29,294.
- The DOA population projection for the City of Franklin for the year 2025 is 40,564 persons. This represents an increase of 6,664 persons or about 20 percent from 2010.
- The SEWRPC population forecast for the City of Franklin for the year 2035 is 50,660 persons. This represents an increase of 16,760 persons or about 49 percent from 2010.
- Comparison of Census and DOA information indicates the Franklin population 65 years and older in age will increase from 2,920 individuals in the year 2000 to 6,920 individuals in the year 2025, an increase of 4,000 individuals or about 137 percent.

Executive Summary

Population Projections & Forecasts (*cont.*):

These projections and forecasts serve, in part, as the rationale, or basis, for the development of public park, open space, and outdoor recreation objectives, principles, and standards as presented in Chapter 3 of the CORP update.

This information clearly indicates that the City of Franklin's population is envisioned to continue to grow at a substantial rate, and in particular, that the age group 65 years and older is envisioned to grow at an unprecedented rate. These changes will create significant and unique burdens upon the City's park, open space, and outdoor recreation system in the near future. This CORP update is specifically intended to accommodate those upcoming changes.



Executive Summary

Principles, Goals, Objectives, and Standards:

The principles, goals, objectives, and standards of this CORP update have been obtained in large part from the current *City of Franklin 2025 Comprehensive Master Plan*, the Southeastern Wisconsin Regional Planning Commission (SEWRPC) standards for individual community park planning in southeastern Wisconsin, the previous *Comprehensive Outdoor Recreation Plan: 2020*, and public input obtained during the preparation of this plan.

In particular, the technical standards set forth in Chapter 3 are based upon similar standards widely used throughout Wisconsin and the United States. Examples of other communities utilizing these standards within their local park plans include the cities of Brookfield, Greenfield, Milwaukee, New Berlin, Racine, and West Bend.



Executive Summary

Implementation of the 2002 Comprehensive Outdoor Recreation Plan:

An inventory of the City of Franklin owned park, open space, and outdoor recreation sites and facilities was completed in August of 2010 as part of the CORP update. Based on the newly collected data, it became evident numerous recommendations from the 2002 CORP were implemented. Highlights of these accomplishments include:

- Development of Jack E. Workman Neighborhood Park located at 3674 West Forest Hill Avenue in the Hunting Park Neighborhood.
- Redevelopment of the former Franklin Fire Station No. 2 located at 11615 West Rawson Avenue into Ken Windl Park.
- Acquisition and Development of Dr. Lynette Fox Memorial Park located at 6860 South Harvard Avenue.
- Acquisition of Tifton Woods (formerly Pleasant View Special Park) a SEWRPC delineated Isolated Natural Resource Feature located in U.S. Public Land Survey Section 12.
- Permanent protection of Fitzsimmons Road Woods, a SEWRPC delineated Regional Natural Area located in U.S. Public Land Survey Section 25 by MLG/Franklin LLC, and the Milwaukee Area Land Conservancy (MALC) through conservation easements.
- Permanent protection of natural resource features in Outlot 9 of the Crooked Creek Subdivision (formerly Hunting Park Special Park) located in U.S. Public Land Survey No. 14 through conservation easements. Additionally, the City of Franklin developed the Crooked Creek Walking Trail within a pedestrian access easement in Outlot 9 of the Crooked Creek Subdivision.

Executive Summary

Major Recommendations of the Comprehensive Outdoor Recreation Plan Update:

In order to simultaneously address the increasing population and the changing demographic conditions envisioned within the City, while still adhering to the Principles, Goals, Objectives, and Standards set forth in this CORP update, it is envisioned that the City of Franklin will need to acquire and develop 10 new parks, to develop one existing undeveloped neighborhood park at an Elementary School site, to develop seven new trails, and to continue to maintain its current parks and trails. The new park sites are summarized in the table below.

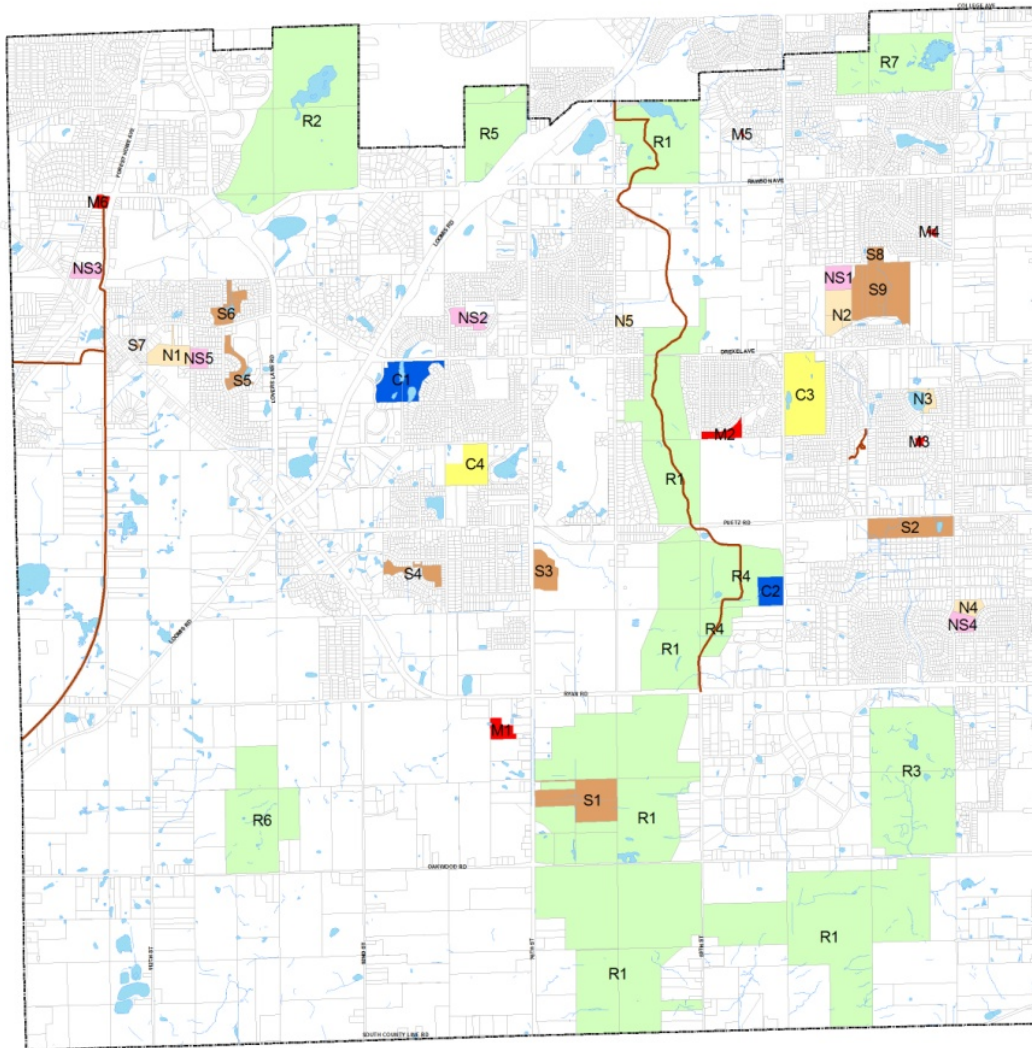
While the Comprehensive Outdoor Recreation Plan Update is primarily focused on those actions for which the City of Franklin will be responsible, the plan does acknowledge that other agencies, organizations, and units of government also provide park, open space, and/or outdoor recreation sites or facilities within the City. If such sites or facilities are typically available to the public, they have been included within this plan, but generally, this plan does not provide recommendations for those sites or facilities. However, when it is determined that a cooperative effort between the City and another agency, organization, or unit of government would be particularly beneficial, some recommendations in that regard have been made. Therefore, the CORP update recommends that acquisition and/or development of three proposed parks (the proposed Central Park and two of the proposed neighborhood parks) and one proposed trail (the proposed trail connecting the Oak Leaf Trail to the City of Franklin Bike and Hiking Trail) should be joint ventures with other units of government.

SUMMARY OF PLANNED NEW PUBLIC PARK, OPEN SPACE, TRAIL, AND OUTDOOR RECREATION
SITES AND FACILITIES

Park Type	Approximate Park Size (acres)
Planned New Regional Parks	
Central Park	200
Subtotal	200
Planned New Community Parks/Facilities	
Community Recreation Center Building and Site	6.25
Planned Trails, Paths, & Linkages	15.63*
Subtotal	21.28
Planned New Neighborhood Parks	
Forest Hills Neighborhood Park	0.00
Hillcrest Neighborhood Park	19.84
Woodview Neighborhood Park	19.84
Subtotal	39.68
Planned New Mini Parks	
Proposed Mini Park No.1	3.00
Proposed Mini Park No.2	3.00
Proposed Mini Park No.3	3.00
Proposed Mini Park No.4	3.00
Proposed Mini Park No.5	3.00
Subtotal	15.00
Planned New Special Parks	
Mahr Woods Special Park	30.00
Subtotal	30.00
Total	306.56

* Approximately 34,040 lineal feet, or about 6.45 miles of trails.

As an update to the 2002 CORP, this plan carries forward many of the recommendations of the earlier plan. In particular, it can be noted that 9 of the 11 parks noted above, and five of the seven trails recommended in this plan, were first recommended in the 2002 CORP. In addition, this CORP Update also recommends that the City's Impact Fee Ordinance, Unified Development Ordinance, Official Map, Comprehensive Master Plan, and Capital Improvement Program, be updated to reflect the information contained within this plan.



COMPREHENSIVE OUTDOOR RECREATION PLAN
MAP 4.1 EXISTING PUBLIC OUTDOOR RECREATION
SITES: 2010

Draft

Legend

- City Boundary
 - Existing Trails
 - Water
- EXISTING PUBLIC PARK SITES**
- REGIONAL AND MULTI-COMMUNITY PARKS**
- R1 Root River Parkway
 - R2 Whitall Park
 - R3 Oakwood Park and Golf Course
 - R4 Milwaukee Co Sports Park
 - R5 Crystal Ridge
 - R6 Franklin Park
 - R7 Grobschmidt Park
- COMMUNITY PARKS (at Park Sites):**
- C1 Lion's Legend Park
 - C2 Froemming Park
- COMMUNITY PLAYFIELDS (at MS or HS Sites):**
- C3 Franklin High School
 - C4 Forest Park Middle School
- NEIGHBORHOOD PARKS (at Park Sites):**
- N1 St. Martins (Robinwood)
 - N2 Pleasant View
 - N3 Jack Workman Park
 - N4 Southwood Glen
 - N5 Christine Rathke Memorial Park
- NEIGHBORHOOD PLAYGROUNDS (at ES Sites):**
- NS1 Pleasant View Elementary
 - NS2 Ben Franklin Elementary
 - NS3 Country Dale Elementary
 - NS4 Southwood Glen Elementary
 - NS5 Robinwood Elementary School
- MINI PARKS (at Park Sites):**
- M1 Lion's Baseball Field
 - M2 Cascade Creek Park
 - M3 Friendship Park
 - M4 Glenn Meadows Park
 - M5 Dr. Lynette Fox Memorial Park
 - M6 Ken Windi Park
- SPECIAL PARKS:**
- S1 Rainbow Airport Park
 - S2 Franklin Woods Nature Center
 - S3 Franklin Little League Complex
 - S4 Meadowlands Park
 - S5 Emie Lake Park
 - S6 Mission Hills Neighborhood Wetlands
 - S7 Market Square
 - S8 Tilton Woods
 - S9 Victory Creek Park



This map shows the approximate relative location of property boundaries but was not prepared by a professional land surveyor. This map is provided for informational purposes only and may not be sufficient or appropriate for legal, engineering, or surveying purposes.

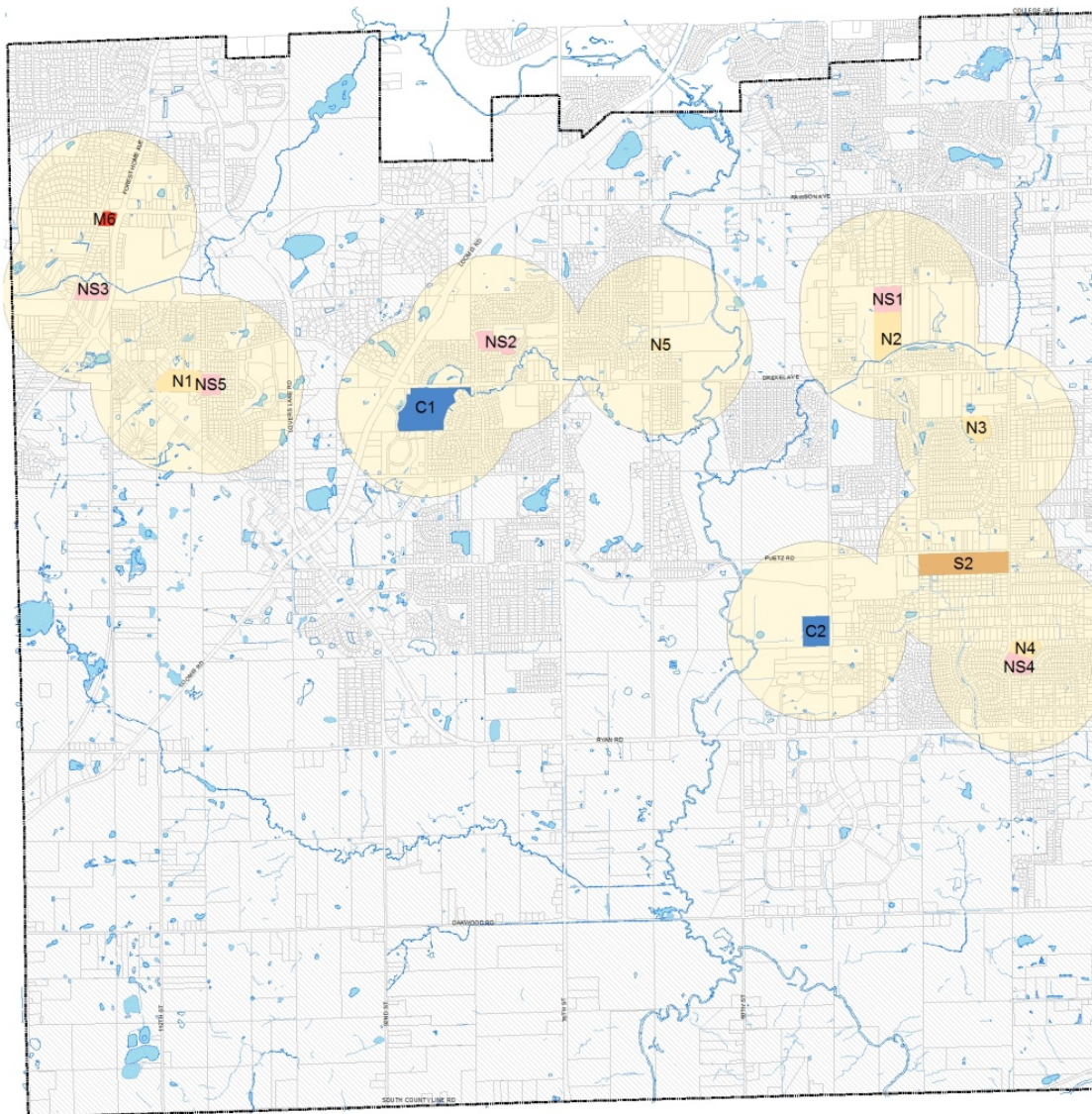




COMPREHENSIVE OUTDOOR RECREATION PLAN

MAP 4.3 EXISTING PARKS SERVING AS NEIGHBORHOOD PARKS AND MINIMUM SERVICE RADII

Draft



Legend

- City Boundary
- NEIGHBORHOOD PARKS (at Park Sites):**
 - N1 St Martins (Robinwood)
 - N2 Pleasant View
 - N3 Jack Workman Park
 - N4 Southwood Glen
 - N5 Christine Rathke Memorial Park
- NEIGHBORHOOD PLAYGROUNDS (at ES Sites):**
 - NS1 Pleasant View Elementary
 - NS2 Ben Franklin Elementary
 - NS3 Country Dale Elementary
 - NS4 Southwood Glen Elementary
 - NS5 Robinwood Elementary School
- COMMUNITY PARKS (at Park Sites):**
 - C1 Lion's Legend Park
 - C2 Froemming Park
- MINI PARKS (at Park Sites):**
 - M6 Ken Windl Park
- SPECIAL PARKS:**
 - S2 Franklin Woods Nature Center
- Water
- 1/2 Mile Radii
- Unserviced Area

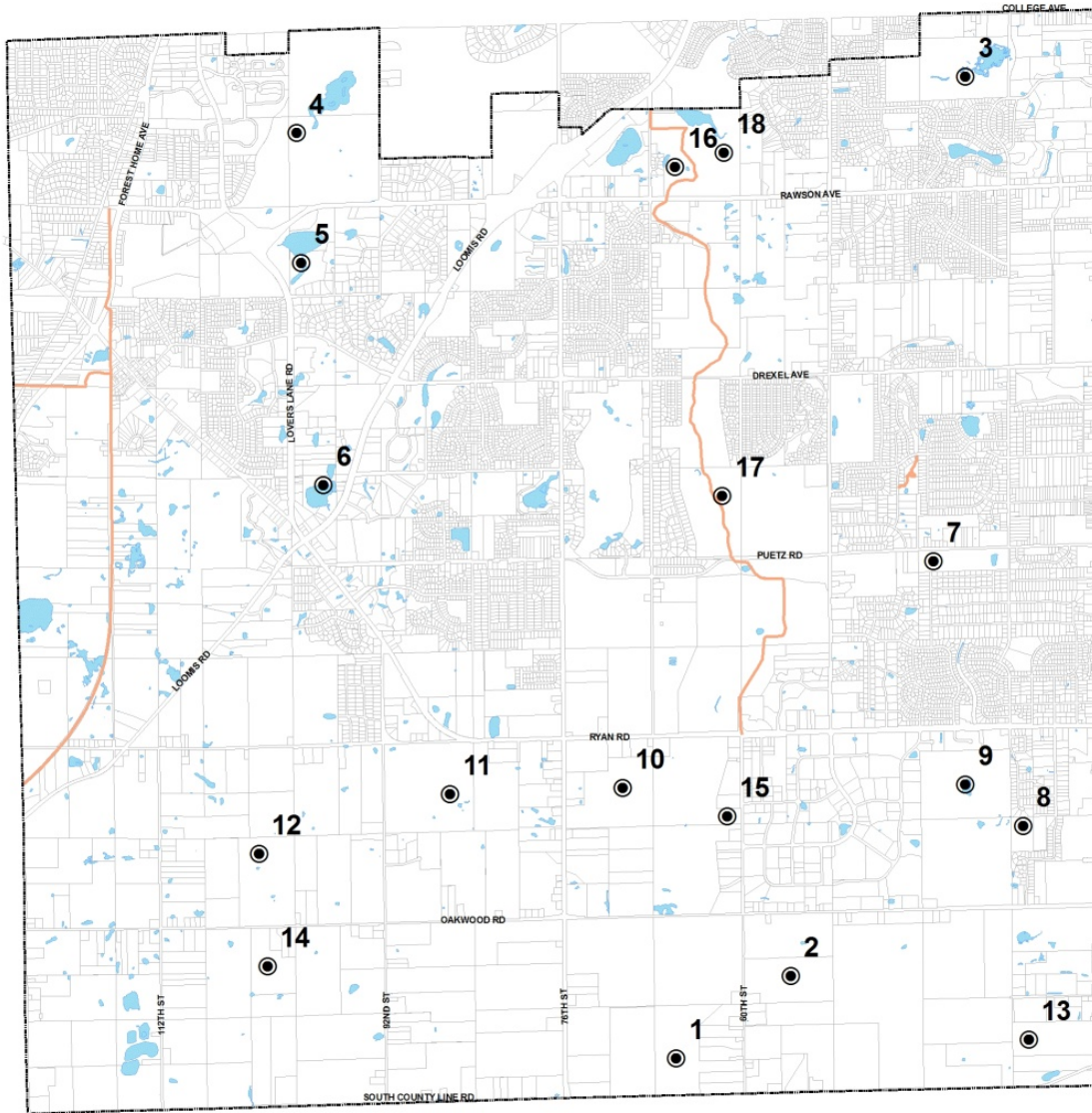


This map shows the approximate relative location of property boundaries but was not prepared by a professional land surveyor. This map is provided for informational purposes only and may not be sufficient or appropriate for legal, engineering, or surveying purposes.



City of Franklin
GIS Department
9225 W. Louisa Rd.
Franklin, WI 53132
www.franklinwi.gov

11/14/2014 10:00 AM
C:\Users\jgarcia\Desktop\GIS\Projects\GIS\Projects\GIS\Map4_3_Parks_Serving_As_Neighborhood_Parks_and_Minimum_Service_Radii.aprx



COMPREHENSIVE OUTDOOR RECREATION PLAN
MAP 4.5 KNOWN NATURAL AREAS IN THE CITY OF FRANKLIN: 2010

Draft

Legend

- City Boundary
- Water
- Existing Trails

Natural Areas

- 1 Root River Canal Woods
- 2 Root River Wet-Mesic Woods - West
- 3 Grobschmidt Park Wetlands and Uplands Woods
- 4 Whitnall Park Woods - South
- 5 Monastery Lake Wetlands
- 6 Mission Hills Wetlands
- 7 Franklin Woods
- 8 Fitzsimmons Woods
- 9 Oakwood Park Oak Woods
- 10 Root River Parkway Prairie
- 11 Ryan Creek Woods
- 12 Franklin Oak Woods and Oak Savanna
- 13 Elm Road Woods
- 14 Adams Prairie
- 15 60th St Woods
- 16 Bike Trail Marsh
- 17 Root River Bike Trail Woodlands
- 18 Root River Low and Upland Woods

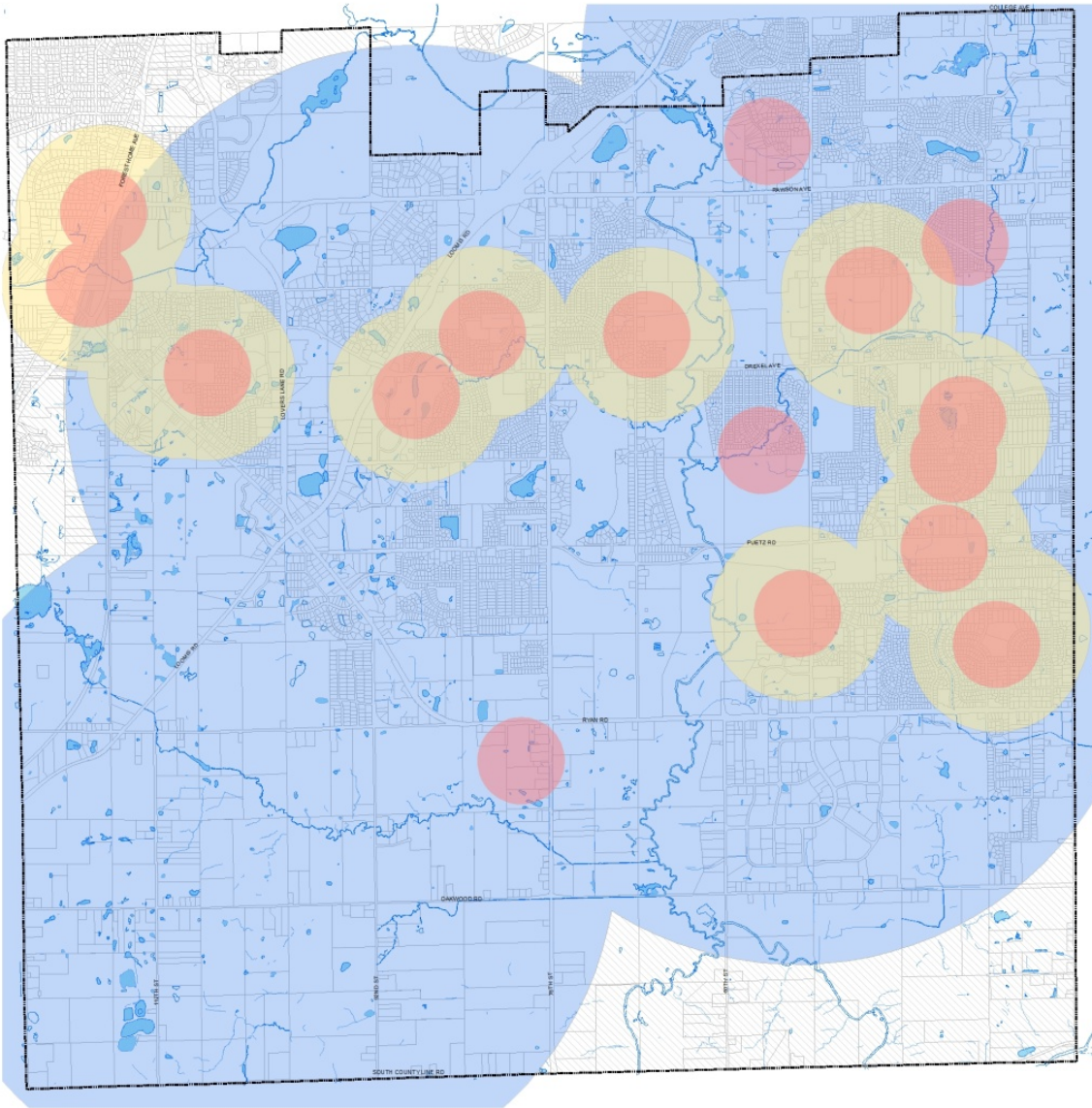
Source: SEWRPC



This map shows the approximate relative location of property boundaries but was not prepared by a professional land surveyor. This map is provided for informational purposes only and may not be sufficient or appropriate for legal, engineering, or surveying purposes.



City of Franklin
GIS Department
3029 W. Loomis Rd.
Franklin, WI 53132
www.franklinwi.gov



COMPREHENSIVE OUTDOOR RECREATION PLAN

MAP 5.1 AREAS SERVED AND NOT SERVED BY COMMUNITY, NEIGHBORHOOD, OR MINI PARKS

Draft

Legend

- City Boundary
- 1/4 Mile Radii
- 1/2 Mile Radii
- 2 Mile Service Radii
- Water
- Unserved Area

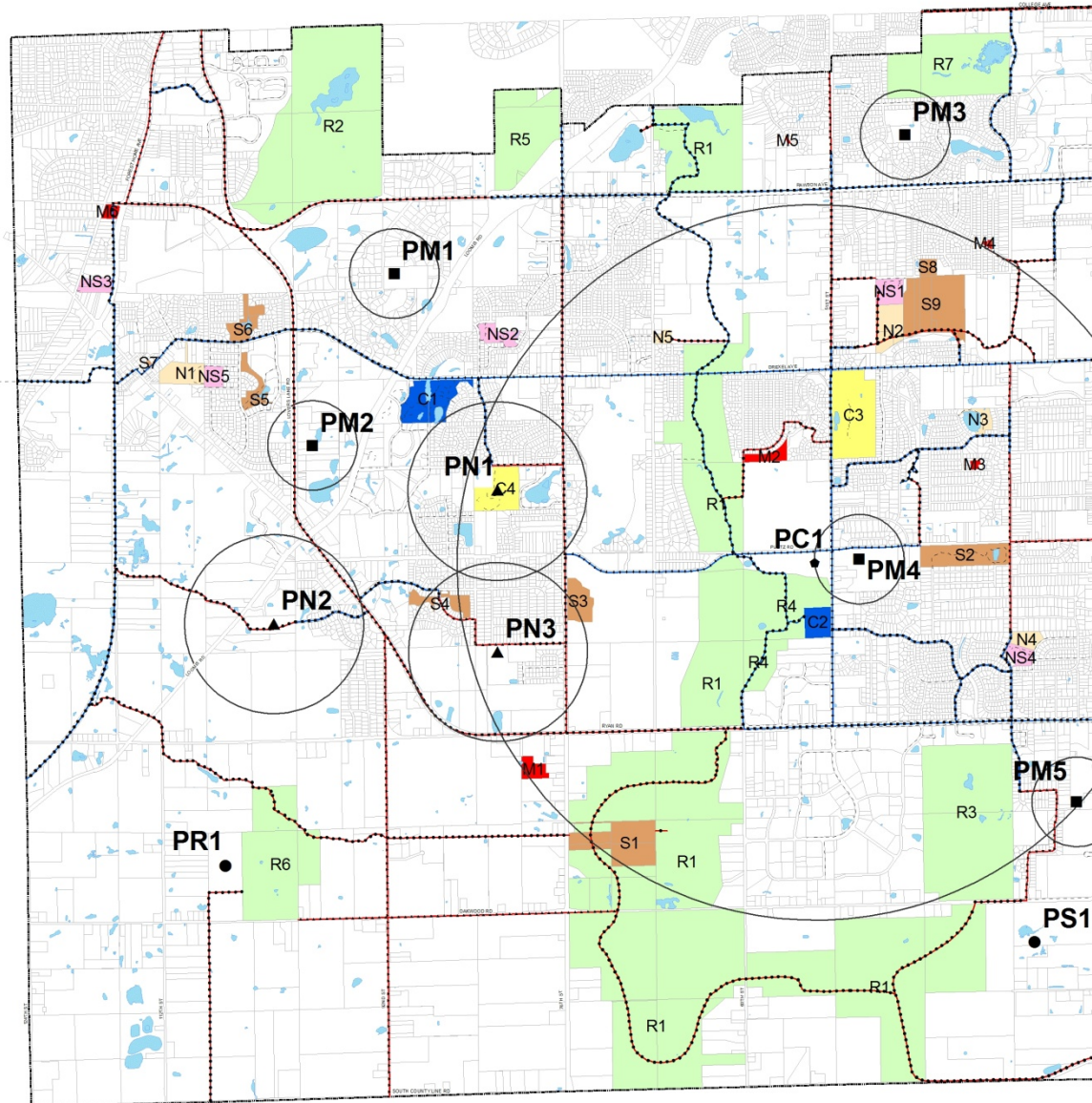


This map shows the approximate relative location of property boundaries but was not prepared by a professional land surveyor. This map is provided for informational purposes only and may not be sufficient or appropriate for legal, engineering, or surveying purposes.

City of Franklin
GIS Department
929 W. Luoma Rd.
Franklin, WI 53132
www.franklin.gov

COMPREHENSIVE OUTDOOR RECREATION PLAN UPDATE: 2025
 MAP 7.1
 EXISTING AND PLANNED PUBLIC OUTDOOR RECREATION
 SITES: 2010

Draft



LEGEND

- City Boundary
- Water
- Existing "Non Trail Network" Sidewalk
- Proposed Public Park Sites**
- Planned Community Park
- Planned Mini Park
- Planned Neighborhood Park
- Planned Regional Park
- Planned Special Park
- PC1 = Community Rec. Center Bldg. Park
- PM1 - PM5 = Mini Parks
- PN2 = Forest Hills Neighborhood Park
- PN3 = Woodview Neighborhood Park
- PR1 = Central Community Gathering Place
- PS1 = Mahr Woods Special park
- Service Area Radii of Planned Facilities
- Trail Type**
- Road Shoulder
- Sidewalk
- Trail
- Unknown
- Trail System Status**
- Existing
- Proposed

- EXISTING PUBLIC PARK SITES**
- REGIONAL AND MULTI-COMMUNITY PARKS**
- R1 Root River Parkway
- R2 Whinnall Park
- R3 Oakwood Park and Golf Course
- R4 Milwaukee Co Sports Park
- R5 Crystal Ridge
- R6 Franklin Park
- R7 Grobschmidt Park
- COMMUNITY PARKS (at Park Sites):**
- C1 Lion's Legend Park
- C2 Froemming Park
- COMMUNITY PLAYFIELDS (at MS or HS Sites):**
- C3 Franklin High School
- C4 Forest Park Middle School
- NEIGHBORHOOD PARKS (at Park Sites):**
- N1 St Martins (Robinwood)
- N2 Pleasant View
- N3 Jack Workman Park
- N4 Southwood Glen
- N5 Christine Rathke Memorial Park
- NEIGHBORHOOD PLAYGROUNDS (at ES Sites):**
- NS1 Pleasant View Elementary
- NS2 Ben Franklin Elementary
- NS3 Country Dale Elementary
- NS4 Southwood Glen Elementary
- NS5 Robinwood Elementary School
- MINI PARKS (at Park Sites):**
- M1 Lion's Baseball Field
- M2 Cascade Creek Park
- M3 Friendship Park
- M4 Glenn Meadows Park
- M5 Dr Lynette Fox Memorial Park
- M6 Ken Windl Park
- SPECIAL PARKS:**
- S1 Rainbow Airport Park
- S2 Franklin Woods Nature Center
- S3 Franklin Little League Complex
- S4 Meadowslands Park
- S5 Ernie Lake Park
- S6 Mission Hills Neighborhood Wetlands
- S7 Market Square
- S8 Tilton Woods
- S9 Victory Creek Park



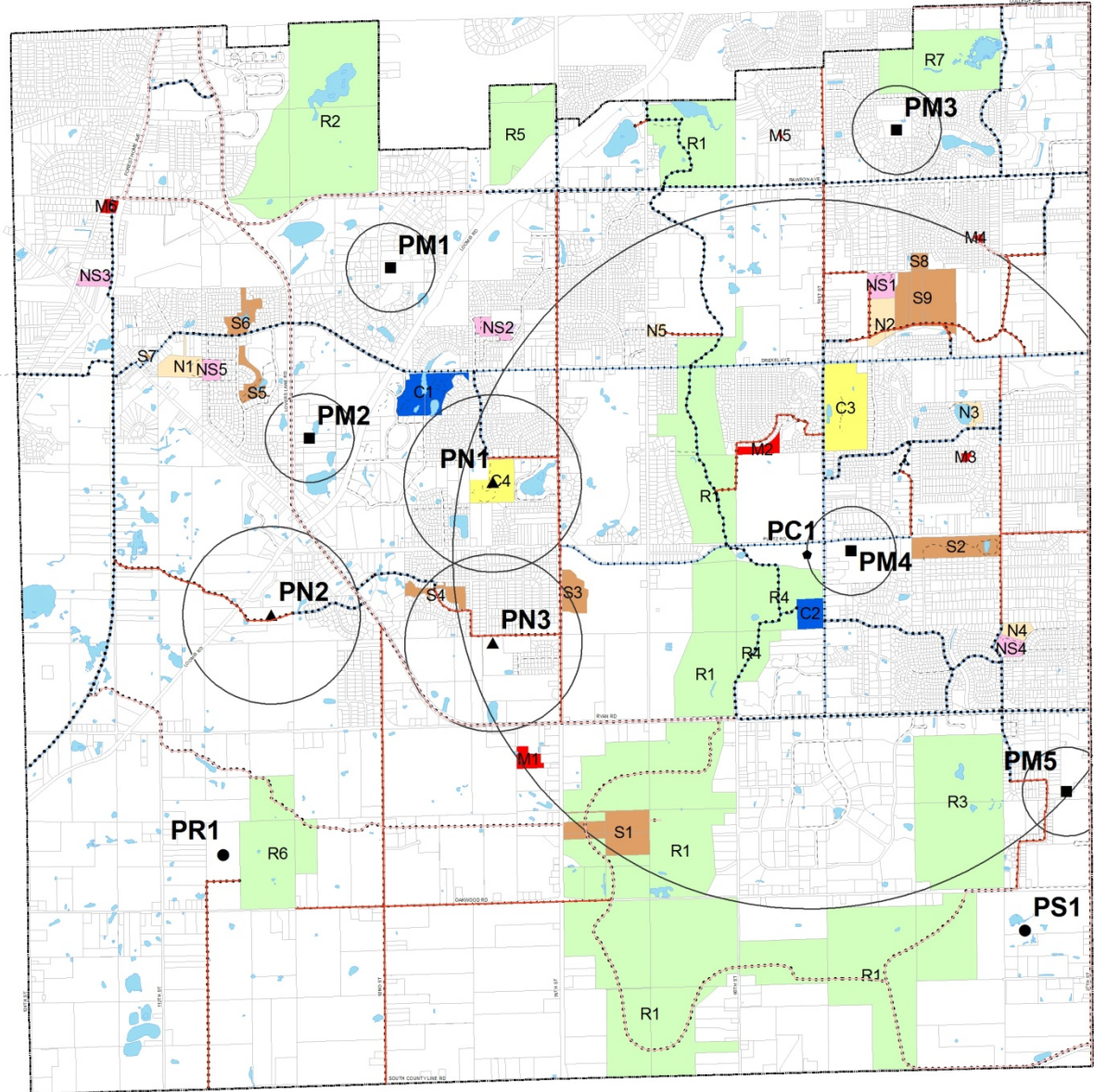
This map shows the approximate relative location of property boundaries but was not prepared by a professional land surveyor. This map is provided for informational purposes only and may not be sufficient or appropriate for legal, engineering, or surveying purposes.





COMPREHENSIVE OUTDOOR RECREATION PLAN UPDATE: 2025
EXISTING AND PLANNED PUBLIC OUTDOOR RECREATION
SITES: 2010

Draft



LEGEND

- City Boundary
- Water
- Existing "Non Trail Network" Sidewalk

Proposed Public Park Sites

- Planned Community Park
- Planned Mini Park
- Planned Neighborhood Park
- Planned Regional Park
- Planned Special Park

- PC1 = Community Rec. Center Bldg. Park
- PM1 - PM5 = Mini Parks
- PN1 = Forest Hills Neighborhood Park
- PN2 = Hillcrest Neighborhood Park
- PN3 = Woodview Neighborhood Park
- PR1 = Central Community Gathering Place
- PS1 = Mahr Woods Special park

- Service Area Radii of Planned Facilities

Trail Type

- Road Shoulder
- Sidewalk
- Trail
- Unknown

Trail System Status

- Existing Trail
- Proposed Trail (Not Maintained by City)
- Proposed Franklin Maintained Trail

EXISTING PUBLIC PARK SITES

REGIONAL AND MULTI-COMMUNITY PARKS

- R1 Root River Parkway
- R2 Whittall Park
- R3 Oakwood Park and Golf Course
- R4 Milwaukee Co Sports Park
- R5 Crystal Ridge
- R6 Franklin Park
- R7 Grobschmidt Park

COMMUNITY PARKS (at Park Sites):

- C1 Lion's Legend Park
- C2 Froemming Park

COMMUNITY PLAYFIELDS (at MS or HS Sites):

- C3 Franklin High School
- C4 Forest Park Middle School

NEIGHBORHOOD PARKS (at Park Sites):

- N1 St Martins (Robinwood)
- N2 Pleasant View
- N3 Jack Workman Park
- N4 Southwood Glen
- N5 Christine Rathke Memorial Park

NEIGHBORHOOD PLAYGROUNDS (at ES Sites):

- NS1 Pleasant View Elementary
- NS2 Ben Franklin Elementary
- NS3 Country Dale Elementary
- NS4 Southwood Glen Elementary
- NS5 Robinwood Elementary School

MINI PARKS (at Park Sites):

- M1 Lion's Baseball Field
- M2 Cascade Creek Park
- M3 Friendship Park
- M4 Glenn Meadows Park
- M5 Dr Lynette Fox Memorial Park
- M6 Ken Windl Park

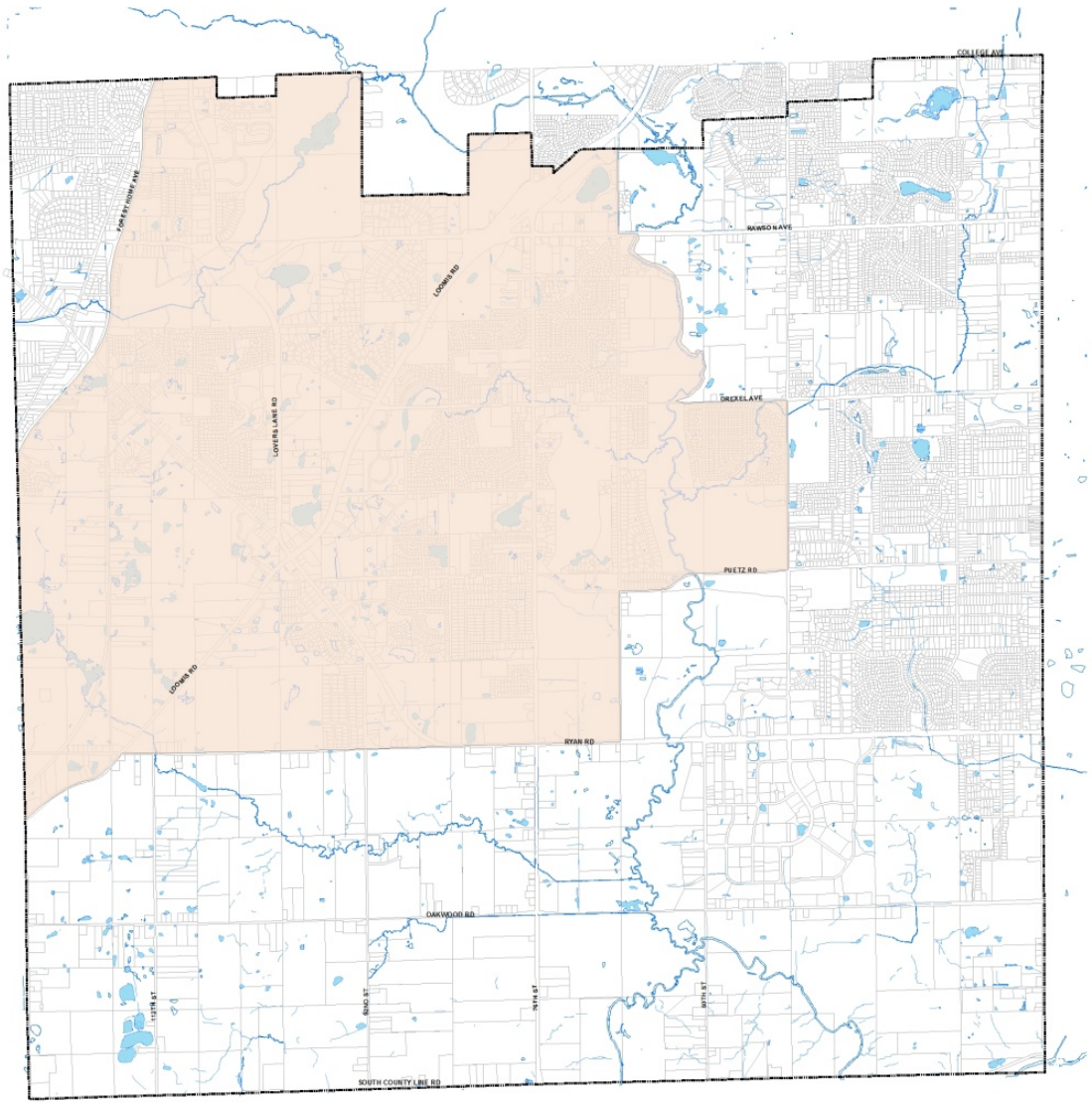
SPECIAL PARKS:

- S1 Rainbow Airport Park
- S2 Franklin Woods Nature Center
- S3 Franklin Little League Complex
- S4 Meadowlands Park
- S5 Ernie Lake Park
- S6 Mission Hills Neighborhood Wetlands
- S7 Market Square
- S8 Tifton Woods
- S9 Victory Creek Park



This map shows the approximate relative location of property boundaries but was not prepared by a professional land surveyor. This map is provided for informational purposes only and may not be sufficient or appropriate for legal, engineering, or surveying purposes.





City of Franklin

COMPREHENSIVE OUTDOOR RECREATION PLAN

MAP 9.1 CITY OF FRANKLIN COMMUNITY PARK FACILITIES ZONES

Draft

Legend

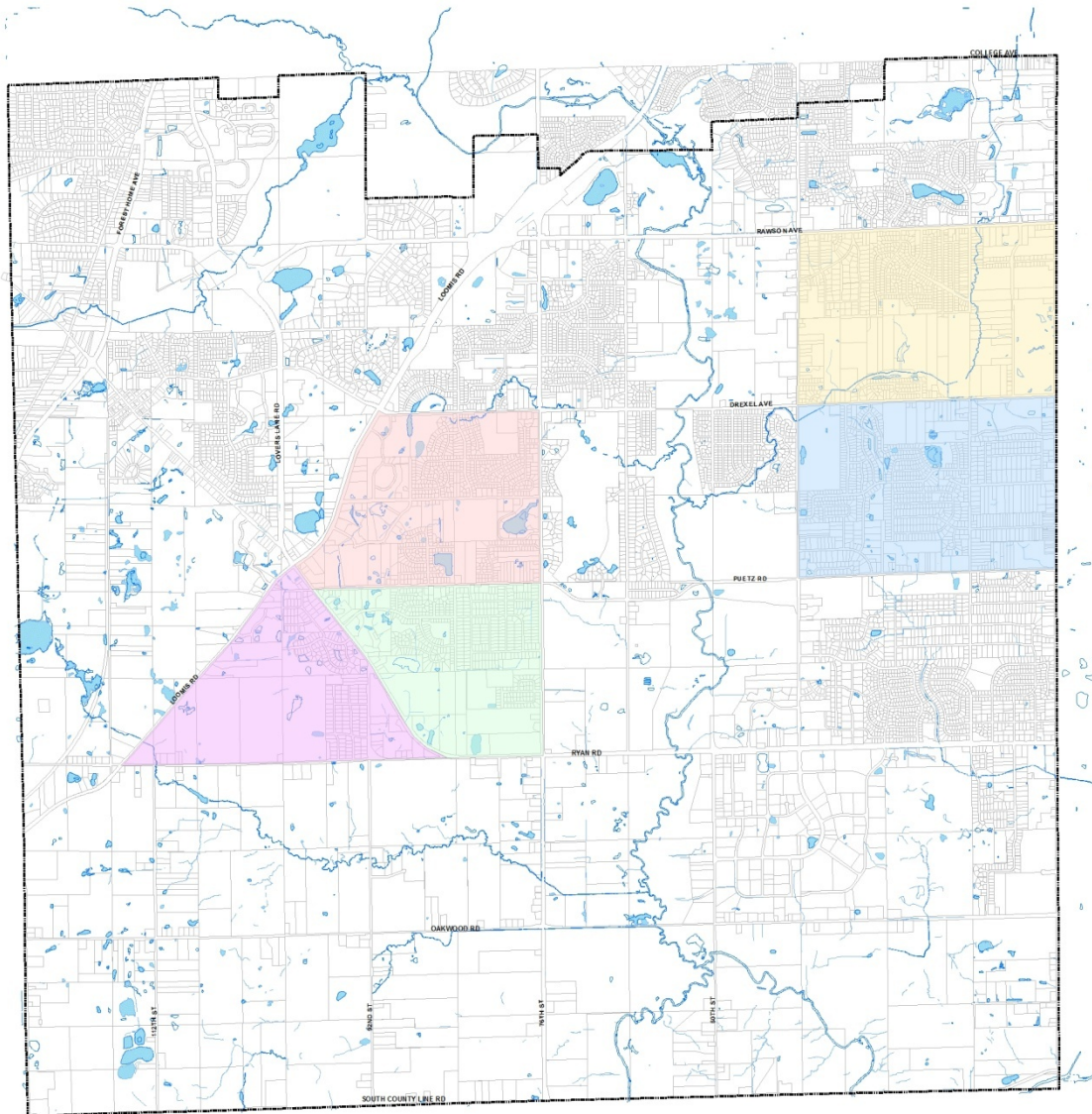
-  City Boundary
-  Water
-  Lions Legend Community Park Zone No 1



This map shows the approximate relative location of property boundaries but was not prepared by a professional land surveyor. This map is provided for informational purposes only and may not be sufficient or appropriate for legal, engineering, or surveying purposes.



City of Franklin
GIS Department
3029 W. Lawrence Rd.
Franklin, WI 53132
www.franklinwi.gov



City of Franklin

COMPREHENSIVE OUTDOOR RECREATION PLAN
MAP 9.2 CITY OF FRANKLIN NEIGHBORHOOD PARK FACILITIES ZONES

Draft

Legend

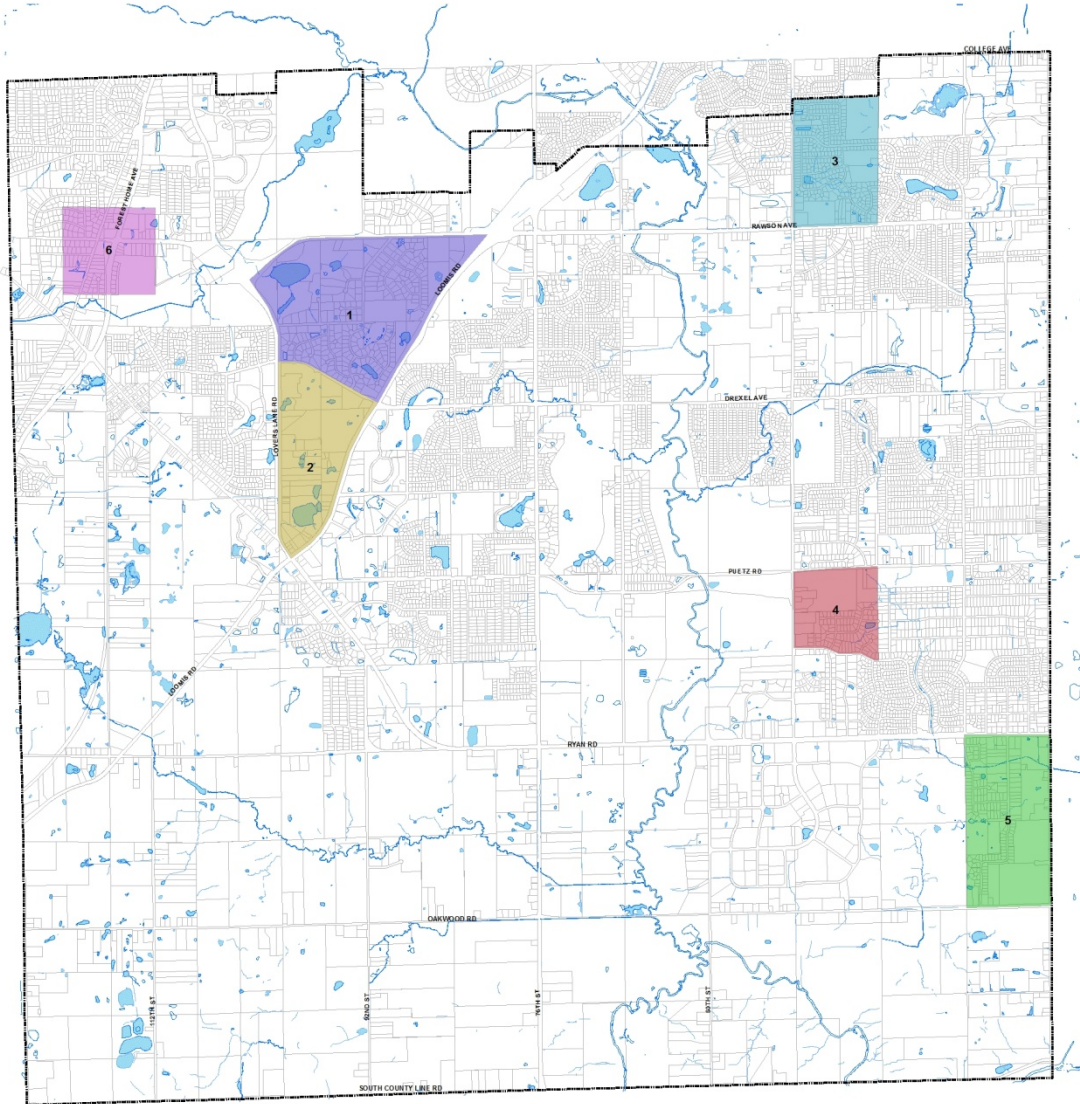
- City Boundary
- Water
- Neighborhood Park District**
 - Forest Hills Neighborhood Park Zone No 1
 - Hillcrest Neighborhood Park Zone No 2
 - Woodview Neighborhood Park Zone No 3
 - Pleasant View Neighborhood Park Zone No 4
 - Jack E Workman Neighborhood Park Zone No 5



This map shows the approximate relative location of property boundaries but was not prepared by a professional land surveyor. This map is provided for informational purposes only and may not be sufficient or appropriate for legal, engineering, or surveying purposes.



City of Franklin
 GIS Department
 9229 W. Loomis Rd.
 Franklin, WI 53122
 www.franklinwi.gov



Draft

Legend

-  City Boundary
-  Water
- Mini Park District**
-  Mini Park Zone No 1
-  Mini Park Zone No 2
-  Mini Park Zone No 3
-  Mini Park Zone No 4
-  Mini Park Zone No 5
-  Mini Park Zone No 6



This map shows the approximate relative location of property boundaries but was not prepared by a professional land surveyor. This map is provided for informational purposes only and may not be sufficient or appropriate for legal, engineering, or surveying purposes.



Comprehensive Outdoor Recreation Plan (CORP)

Workshop Summary:

On November 30, 2010, the City of Franklin conducted a Comprehensive Outdoor Recreation Plan (CORP) Public Workshop at City Hall. The objective of the meeting was to obtain the public's comments, thoughts, ideas, suggestions and concerns pertaining to parks, open space and outdoor recreation prior to completing a draft update of the CORP.

13 persons, including Aldermen and staff, attended the Public Workshop. At the meeting, Planning Department staff described the status of the CORP update and the purpose of the workshop. In addition, staff noted that two additional public input opportunities will be provided – an Open House in January and a Public Hearing in March.

The following is a summary of the discussion, comments, thoughts, ideas, suggestions, and concerns that the participants raised at the workshop:

- Discussion of the differences between specific versus general future park locations.
- Suggestion that the City update its impact fee structure as it relates to parks.
- Discussion of the Conservation Fund land purchases in the City.
- Comments about the popularity of the Oak Leaf Trail parking lots.
- Questions about riding bicycles on public sidewalks in Franklin.
- Questions about the future of the Milwaukee County Park System, and whether any County owned parks will be turned over to the City of Franklin.

Workshop Summary (*cont.*):

- Discussion of future parkland acquisition timing.
- Comments about the significance of school district input.
- Suggestion that the CORP update include the Parks Commission recommendations made one year ago.
- Suggestion that public school amenities (e.g. playing fields) and private parks (e.g., Croatian and Polonia Parks) be included in the CORP.
- Suggestion that nationally recognized park and trail standards be included in the CORP update.
- Discussion of how the CORP will address costs.
- Concern that there's a lot of traffic on County Road H (Ryan Road) and that it is not safe for bicyclists.
- Discussion of the new federal law pertaining to bike lanes/trails and award money.

Workshop Summary (cont.):

- Suggestion to add trail/pathway/pedestrian access to the library from nearby areas.
- Suggestion that the CORP recommend connection of the City's parks, trails, recreation areas, and natural resource areas and that those connections be shown on a map in the CORP update (e.g. Christine Rathke Park is difficult to access). Connections should also take into account access to features that are located outside of the City's corporate limits.
- Suggestion to add sidewalks to collector and arterial streets to improve connectivity.
- Suggestion to provide a pedestrian access plan in the CORP, or at least address the need for one.
- Suggestion to emphasize educational programs on the importance of natural areas and farming/gardening/vermiculture, followed by a discussion on how the City should think outside the box when it comes to park maintenance (e.g., utilize sheep within some of the City's parks to help clear grass in place of lawnmowers, have volunteers clear brush, etc.).
- Suggestion to separate bike lanes from the street to improve safety (e.g. bike lanes/wide shoulders on Oakwood Road do not feel safe).
- Suggestion to add more natural spaces and less tot lots.
- Suggestion that the future development of Franklin Park should warrant careful planning since it is a state designated natural area.

Workshop Summary (cont.):

- Suggestion to add the library to CORP maps.
- Suggestion to add a map to the CORP survey and relocate the electronic “submit” button on the City’s website.
- Suggestion to identify the purpose and philosophy of each existing and planned park.
- Suggestion to avoid amenity duplication, as this will help reduce costs.
- Suggestion to provide an opportunity for public input of proposed trail locations.
- Suggestion to provide adequate and advance notice of the Open House meeting and to hold a follow-up meeting.
- Suggestion to advertise future public participation opportunities pertaining to the CORP in the next City newsletter.

Comprehensive Outdoor Recreation Plan (CORP)

Survey Summary:

On November 23, 2010, the City of Franklin placed a short park and recreation survey on the City website, and forwarded copies to organizations such as the Franklin Historical Society and the Friends of Franklin Parks. The objective of the survey was to obtain preliminary indications of the public's use of the park, open space, and outdoor recreation sites and facilities within the City of Franklin. As of January 10, 2011, 163 surveys had been returned.

The following is a summary of the public's responses to some of the key survey questions.

- The most often visited park, open space, or outdoor recreation site within the City of Franklin was the Oak Leaf Trail. Only slightly less often visited were Whitnall Park and the Root River Parkway. Other frequently visited sites were Lions Legend Park and the Milwaukee County Sports Complex.
- The majority of respondents (64 percent) indicated that they were very satisfied with the parks, open space, and outdoor recreation sites in the City. About 25 percent of the respondents indicated that they were somewhat satisfied.
- The most commonly expressed concerns about the existing park system in the City regarded: the need to fix old, damaged or unsafe facilities; the need to more frequently clean up litter, clean out garbage cans, and/or pick up dog waste; and the need to mow and/or otherwise address tall grass, weeds, and invasive plants.
- The most frequently undertaken recreational activity was walking/hiking. Other frequent activities included biking, bird/nature watching, and playing at playgrounds.
- The most frequently requested additional recreational facilities included: paths or trails for hiking, biking, walking, and/or skiing; a pool, waterpark, and/or other type of swimming opportunity; and restrooms.