

- CIVIL ENGINEERING
- SURVEYING & MAPPING
- CONSTRUCTION SERVICES
- WATER RESOURCES
- PLANNING & DEVELOPMENT
- TRANSPORTATION ENGINEERING
- LANDSCAPE ARCHITECTURE

MILWAUKEE REGIONAL OFFICE  
 N22 W22931 WANCYS COURT SUITE 3  
 WAUKESHA, WISCONSIN 53186  
 262.513.0686 PHONE | 262.513.1232 FAX  
 MADISON | MILWAUKEE  
 KENOSHA | APPLETON  
[www.jsdinc.com](http://www.jsdinc.com)

SERVICES PROVIDED TO:

PROJECT:  
**BALLPARK COMMONS**

PROJECT LOCATION:  
 CITY OF FRANKLIN  
 MILWAUKEE COUNTY, WI

JSD PROJECT NO.: 14-6548

SEAL/SIGNATURE:

ALTHOUGH EVERY EFFORT HAS BEEN MADE IN PREPARING THESE PLANS AND CHECKING THEM FOR ACCURACY, THE CONTRACTOR AND SUBCONTRACTORS MUST CHECK ALL DETAIL AND DIMENSIONS OF THEIR TRADE AND BE RESPONSIBLE FOR THE SAME.

DESIGN BY:	CAP	01/29/2016
DRAWN BY:	CAP	01/29/2016
CHECKED BY:	ALJ	01/29/2016

PLAN MODIFICATIONS:

NO.	DESCRIPTION	DATE

**DIGGERS HOTLINE**  
 Call 811 or (800) 242-8511  
 Milwaukee Area (262) 432-7910  
 Hearing Impaired TDD (800) 542-2289  
[www.DiggersHotline.com](http://www.DiggersHotline.com)

SHEET TITLE:  
**PDD LIMITS (SHEET 2)**

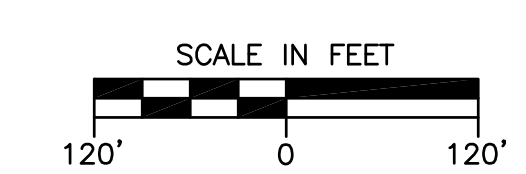
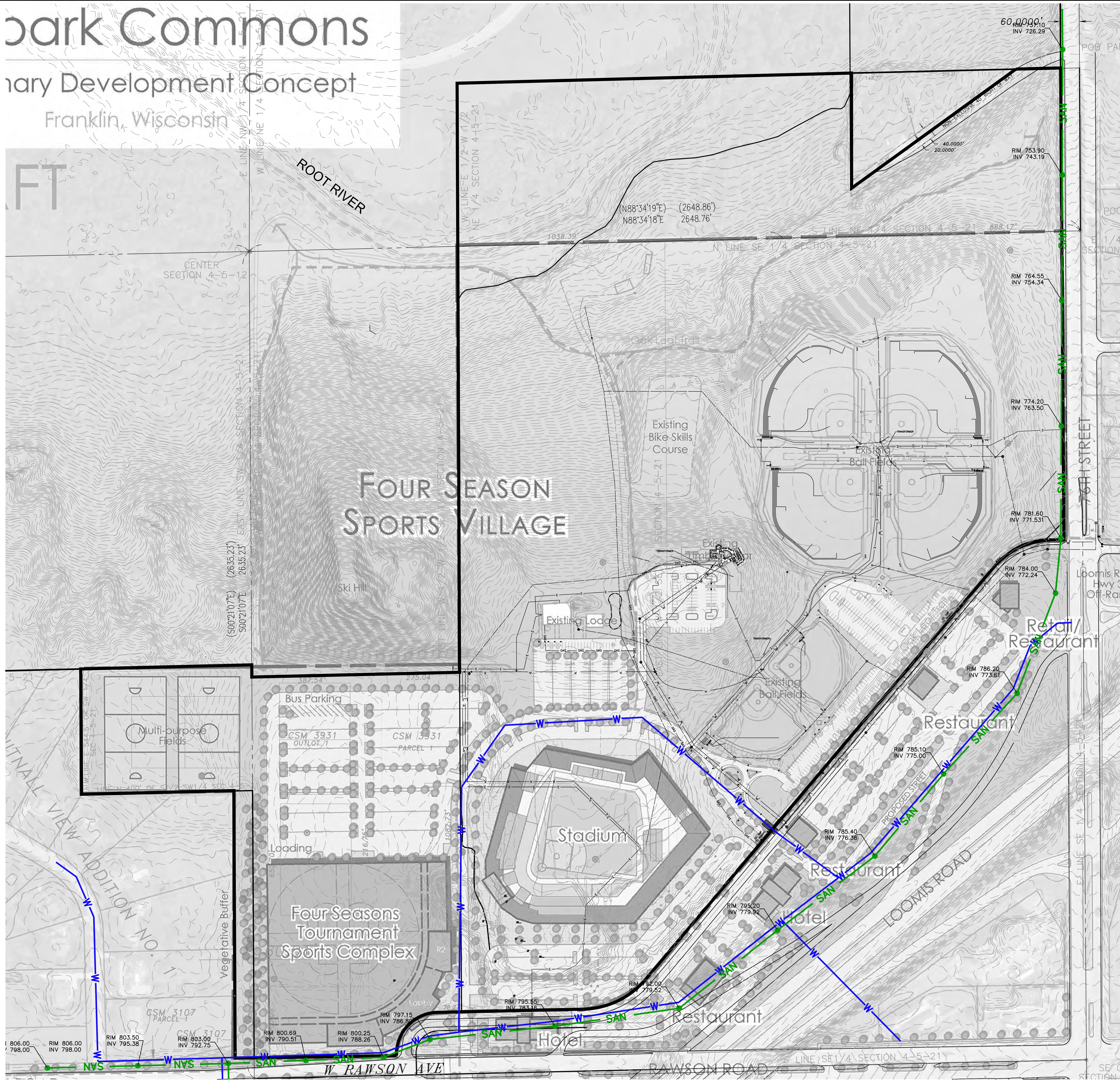
SHEET NUMBER:  
**EXHIBIT**

# Ballpark Commons

## Utility Development Concept

Franklin, Wisconsin

100 FT



**JSD Professional Services, Inc.**  
 Engineers • Surveyors • Planners

*"BUILDING RELATIONSHIPS WITH A COMMITMENT TO CLIENT SATISFACTION THROUGH TRUST, QUALITY AND EXPERIENCE"*

- CIVIL ENGINEERING
- SURVEYING & MAPPING
- CONSTRUCTION SERVICES
- WATER RESOURCES
- PLANNING & DEVELOPMENT
- TRANSPORTATION ENGINEERING
- LANDSCAPE ARCHITECTURE

MILWAUKEE REGIONAL OFFICE  
 N22 W22511 WANCYS COURT SUITE 3  
 WAUKESHA, WISCONSIN 53186  
 262.513.0666 PHONE | 262.513.1232 FAX

MADISON | MILWAUKEE  
 KENOSHA | APPLETON

[www.jsdinc.com](http://www.jsdinc.com)

SERVICES PROVIDED TO:

PROJECT:  
**BALLPARK COMMONS**

PROJECT LOCATION:  
 CITY OF FRANKLIN  
 MILWAUKEE COUNTY, WI

JSD PROJECT NO.: 14-6548

SEAL/SIGNATURE:

ALTHOUGH EVERY EFFORT HAS BEEN MADE IN PREPARING THESE PLANS AND CHECKING THEM FOR ACCURACY, THE CONTRACTOR AND SUBCONTRACTORS MUST CHECK ALL DETAIL AND DIMENSIONS ON THEIR TRADE AND BE RESPONSIBLE FOR THE SAME.

DESIGN BY: CAP 01-29-2016  
 DRAWN BY: CAP 01-29-2016  
 CHECKED BY: ALJ 01-29-2016

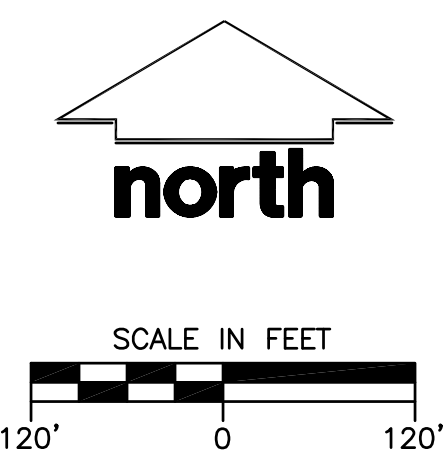
PLAN MODIFICATIONS:

**DIGGERS HOTLINE**  
 Call 811 or (800) 242-8511  
 Milwaukee Area (262) 432-7910  
 Hearing Impaired TDD (800) 542-2289  
[www.DiggersHotline.com](http://www.DiggersHotline.com)

SHEET TITLE:  
**UTILITY EXHIBIT (SHEET 1)**

SHEET NUMBER:  
**EXHIBIT**

THESE PLANS AND DESIGNS ARE COPYRIGHT PROTECTED AND MAY NOT BE USED IN WHOLE OR IN PART WITHOUT THE WRITTEN CONSENT OF JSD PROFESSIONAL SERVICES, INC.



**JSD Professional Services, Inc.**  
 Engineers • Surveyors • Planners  
 "BUILDING RELATIONSHIPS WITH A COMMITMENT TO CLIENT SATISFACTION THROUGH TRUST, QUALITY AND EXPERIENCE"  
 • CIVIL ENGINEERING  
 • SURVEYING & MAPPING  
 • CONSTRUCTION SERVICES  
 • WATER RESOURCES  
 • PLANNING & DEVELOPMENT  
 • TRANSPORTATION ENGINEERING  
 • LANDSCAPE ARCHITECTURE  
 MILWAUKEE REGIONAL OFFICE  
 N22 W22511 NANCYS COURT SUITE 3  
 WALKESHA, WISCONSIN 53186  
 262.513.0666 PHONE | 262.513.1232 FAX  
 MADISON | MILWAUKEE  
 KENOSHA | APPLETON  
 www.jsdinc.com

SERVICES PROVIDED TO:  
 PROJECT:  
**BALLPARK COMMONS**

PROJECT LOCATION:  
 CITY OF FRANKLIN  
 MILWAUKEE COUNTY, WI

JSD PROJECT NO.: 14-6548

SEAL/SIGNATURE:

ALTHOUGH EVERY EFFORT HAS BEEN MADE IN PREPARING THESE PLANS AND CHECKING THEM FOR ACCURACY, THE CONTRACTOR AND SUBCONTRACTORS MUST CHECK ALL DETAIL AND DIMENSIONS OF THEIR TRADE AND BE RESPONSIBLE FOR THE SAME.

DESIGN BY: CAP 01-29-2016  
 DRAWN BY: CAP 01-29-2016  
 CHECKED BY: ALJ 01-29-2016

PLAN MODIFICATIONS:

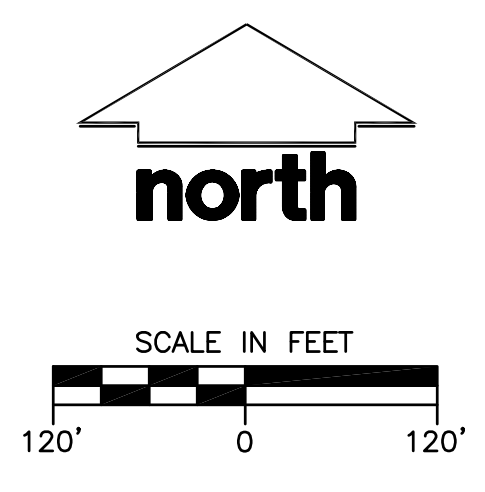
NO.	DESCRIPTION	DATE

**DIGGERS HOTLINE**  
 Call 811 or (800) 242-8511  
 Milwaukee Area (262) 432-7910  
 Hearing Impaired TDD (800) 542-2289  
 www.DiggersHotline.com

SHEET TITLE:  
**UTILITY EXHIBIT  
 (SHEET 2)**

SHEET NUMBER:  
**EXHIBIT**

THESE PLANS AND DESIGNS ARE COPYRIGHT PROTECTED AND MAY NOT BE USED IN WHOLE OR IN PART WITHOUT THE WRITTEN CONSENT OF JSD PROFESSIONAL SERVICES, INC.



**JSD Professional Services, Inc.**  
 Engineers • Surveyors • Planners

*"BUILDING RELATIONSHIPS WITH A COMMITMENT TO CLIENT SATISFACTION THROUGH TRUST, QUALITY AND EXPERIENCE"*

- CIVIL ENGINEERING
- SURVEYING & MAPPING
- CONSTRUCTION SERVICES
- WATER RESOURCES
- PLANNING & DEVELOPMENT
- TRANSPORTATION ENGINEERING
- LANDSCAPE ARCHITECTURE

MILWAUKEE REGIONAL OFFICE  
 N22 W22511 WANCYS COURT SUITE 3  
 WALKESHA, WISCONSIN 53186  
 262.513.0666 PHONE | 262.513.1232 FAX

MADISON | MILWAUKEE  
 KENOSHA | APPLETON

[www.jsdinc.com](http://www.jsdinc.com)

SERVICES PROVIDED TO:

PROJECT:  
**BALLPARK COMMONS**

PROJECT LOCATION:  
 CITY OF FRANKLIN  
 MILWAUKEE COUNTY, WI

JSD PROJECT NO.: 14-6548

SEAL/SIGNATURE:

ALTHOUGH EVERY EFFORT HAS BEEN MADE IN PREPARING THESE PLANS AND CHECKING THEM FOR ACCURACY, THE CONTRACTOR AND SUBCONTRACTORS MUST CHECK ALL DETAIL AND DIMENSIONS ON THEIR TRADE AND BE RESPONSIBLE FOR THE SAME.

DESIGN BY: CAP 01-29-2016  
 DRAWN BY: CAP 01-29-2016  
 CHECKED BY: ALJ 01-29-2016

PLAN MODIFICATIONS:

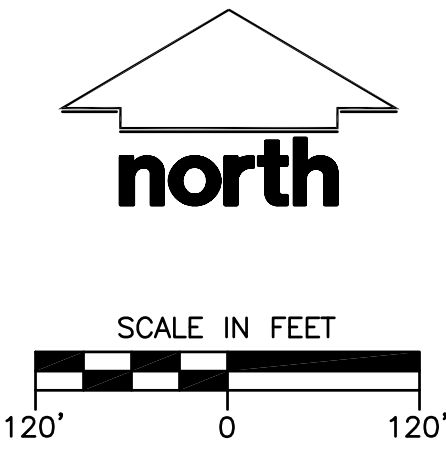
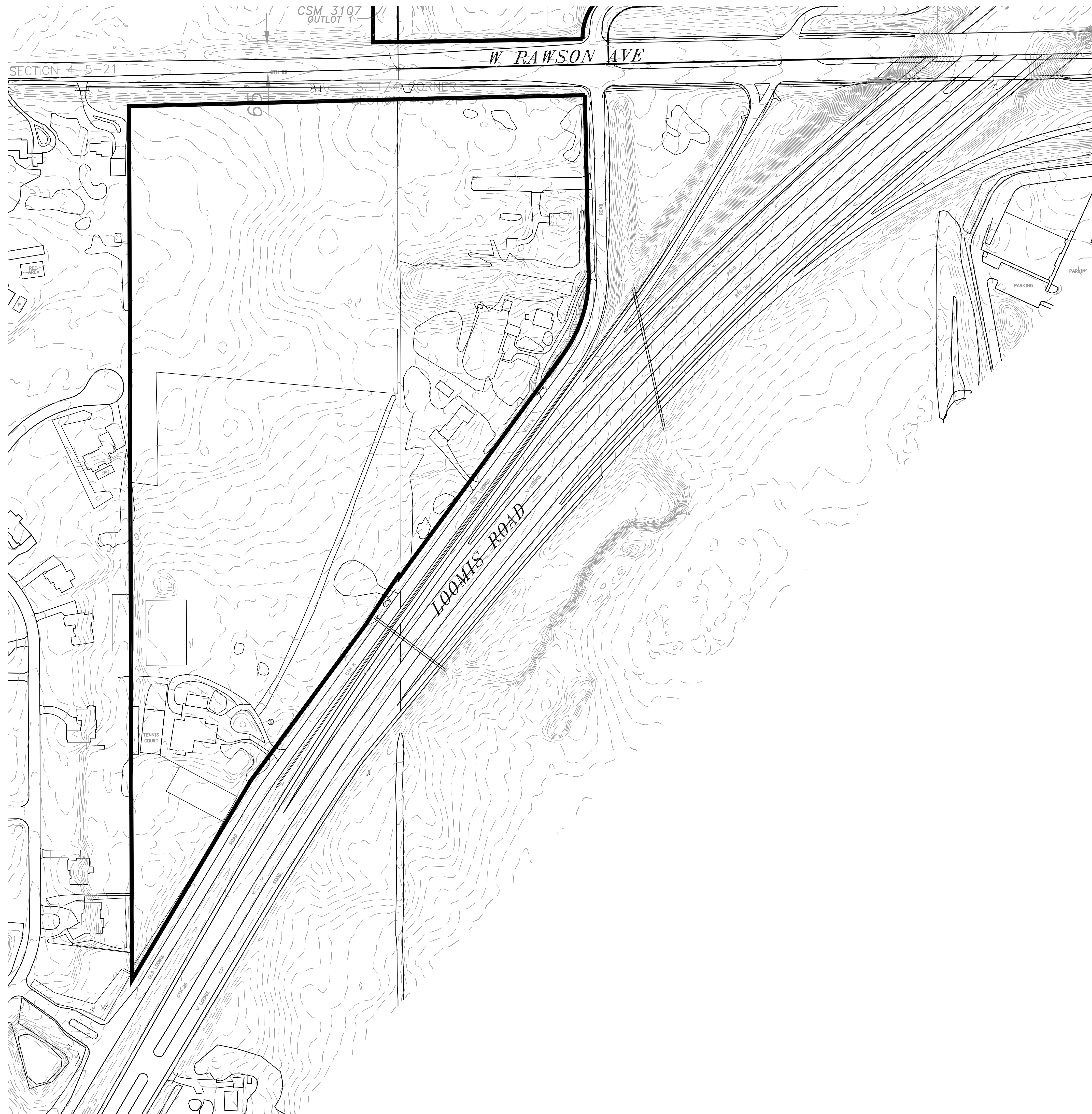
NO.	DESCRIPTION	DATE

**DIGGERS HOTLINE**  
 Call 811 or (800) 242-8511  
 Milwaukee Area (262) 432-7910  
 Hearing Impaired TDD (800) 542-2289  
[www.DiggersHotline.com](http://www.DiggersHotline.com)

SHEET TITLE:  
**TOPOGRAPHIC EXHIBIT (SHEET 1)**

SHEET NUMBER:  
**EXHIBIT**

THESE PLANS AND DESIGNS ARE COPYRIGHT PROTECTED AND MAY NOT BE USED IN WHOLE OR IN PART WITHOUT THE WRITTEN CONSENT OF JSD PROFESSIONAL SERVICES, INC.



**JSD Professional Services, Inc.**  
 • Engineers • Surveyors • Planners

*"BUILDING RELATIONSHIPS WITH A COMMITMENT TO CLIENT SATISFACTION THROUGH TRUST, QUALITY AND EXPERIENCE"*

- CIVIL ENGINEERING
- SURVEYING & MAPPING
- CONSTRUCTION SERVICES
- WATER RESOURCES
- PLANNING & DEVELOPMENT
- TRANSPORTATION ENGINEERING
- LANDSCAPE ARCHITECTURE

MILWAUKEE REGIONAL OFFICE  
 N22 W22531 NANCYS COURT SUITE 3  
 WALKESHA, WISCONSIN 53186  
 262.513.0666 PHONE | 262.513.1232 FAX

MADISON | MILWAUKEE  
 KENOSHA | APPLETON

[www.jsdinc.com](http://www.jsdinc.com)

SERVICES PROVIDED TO:

PROJECT:  
**BALLPARK COMMONS**

PROJECT LOCATION:  
 CITY OF FRANKLIN  
 MILWAUKEE COUNTY, WI

JSD PROJECT NO.: 14-6548

SEAL/SIGNATURE:

ALTHOUGH EVERY EFFORT HAS BEEN MADE IN PREPARING THESE PLANS AND CHECKING THEM FOR ACCURACY, THE CONTRACTOR AND SUBCONTRACTORS MUST CHECK ALL DETAIL AND DIMENSIONS ON THEIR TRADE AND BE RESPONSIBLE FOR THE SAME.

DESIGN BY: CAP 01-29-2016  
 DRAWN BY: CAP 01-29-2016  
 CHECKED BY: ALJ 01-29-2016

PLAN MODIFICATIONS:

NO.	DATE	DESCRIPTION

**DIGGERS HOTLINE**  
 Call 811 or (800) 242-8511  
 Milwaukee Area (262) 432-7910  
 Hearing Impaired TDD (800) 542-2289  
[www.DiggersHotline.com](http://www.DiggersHotline.com)

SHEET TITLE:  
 TOPOGRAPHIC  
 EXHIBIT  
 (SHEET 2)

SHEET NUMBER:  
**EXHIBIT**

THESE PLANS AND DESIGNS ARE COPYRIGHT PROTECTED AND MAY NOT BE USED IN WHOLE OR IN PART WITHOUT THE WRITTEN CONSENT OF JSD PROFESSIONAL SERVICES, INC.

Hello, My name is Melody Skusek and since I could not attend any of the listening Meetings for the proposed BallPark Commons I wanted to pass along my opinion. My husband and I moved into Franklin 25 years ago. As the years have passed by Franklin has experienced growth both in housing and business. But the community surrounding our "supposed downtown area" around 76th and Rawson has stood at a standstill. And that is putting it mildly. Stores have left, we have very few restaurants and absolutely no entertainment value at all.

Thank goodness Mr. Zimmerman has thought out of the box and established the existing Rock Complex.

Community members have seen the rise of our neighbors to the east. Their government leadership again has thought outside the box to build quite a array of government buildings, hotels, apartments and countless new stores and restaurants. I'm sure the city of Oak Creek had gone through countless battles with their community leaders and the general public revolting the fact that they did not want to tax the people of Oak Creek, etc. Well, everything went through, the people of Oak Creek are paying higher taxes but in the end they will reap the benefits of tax benefits from the Town Square.

People from our community travel into Oak Creek to take advantage of the Meijer store and many of the new restaurants. Wouldn't it be nice to offer our people the same situation so they do not have to travel to Oak Creek and north to Greendale and Greenfield to eat and play.

The City of Greendale recently went through a similar situation when the proposal for Marcus Theaters were suggested. The battle continued and now approved the city will benefit by taxes being received with a proposed value of 9 Million by 2018.

We have already turned down the Meijer project in Franklin as I'm sure other proposed projects with the capability of generating taxable income to the City have also been turned down.

Now is the time for the people and the City of Franklin leaders to jump on this proposal. The Hampton Inn will reap the benefits this coming summer when they will sell out every weekend with travel baseball teams coming from around the state and country. Wouldn't it be nice to be able to offer the families additional venues for restaurants and entertainment so they would not have to travel to surrounding communities to spend their money?

Our new motto in Franklin should be "Let's put Franklin on the map" By adding a minor league baseball park to the area will bring countless people to our city and revenue to the city. It will be prestigious. People from around the state and around the country will google "things to do in the Metro Milwaukee area and see what Franklin has to offer and will travel to our City. They will purchase tickets to the games and then hopefully sleep over and eat. We will be a destination. We have

been involved with travel baseball with our Grandson's baseball teams for the last 10 years. We have traveled around the state and the country and spent lots of money while traveling in the cities where the tournaments have been played.

Baseball is a family thing, we will have good people coming to our city. Baseball is America's pastime and why not take advantage of that.

And then to host the UW Milwaukee team will add even more as a destination for people to come and stay. Thousands and thousands of people from Metro Milwaukee and our state travel to Grafton to watch the Chinooks, Appleton to watch the Timber Rattlers, Kenosha, the Kingfish and spend money. They stay and play.

It's time, let's not let this opportunity pass us by again. We need to move into 2016. Let's work together as a team to make this happen. Let's not make this a republican/democrat situation. We may have to pay to gain but in the end it will be worth it. Franklin will be on the map, we will be a destination and will benefit monetary wise for a very long time to come.

Thank you very much, Melody Skusek

*Melody Skusek*

414-510-7671