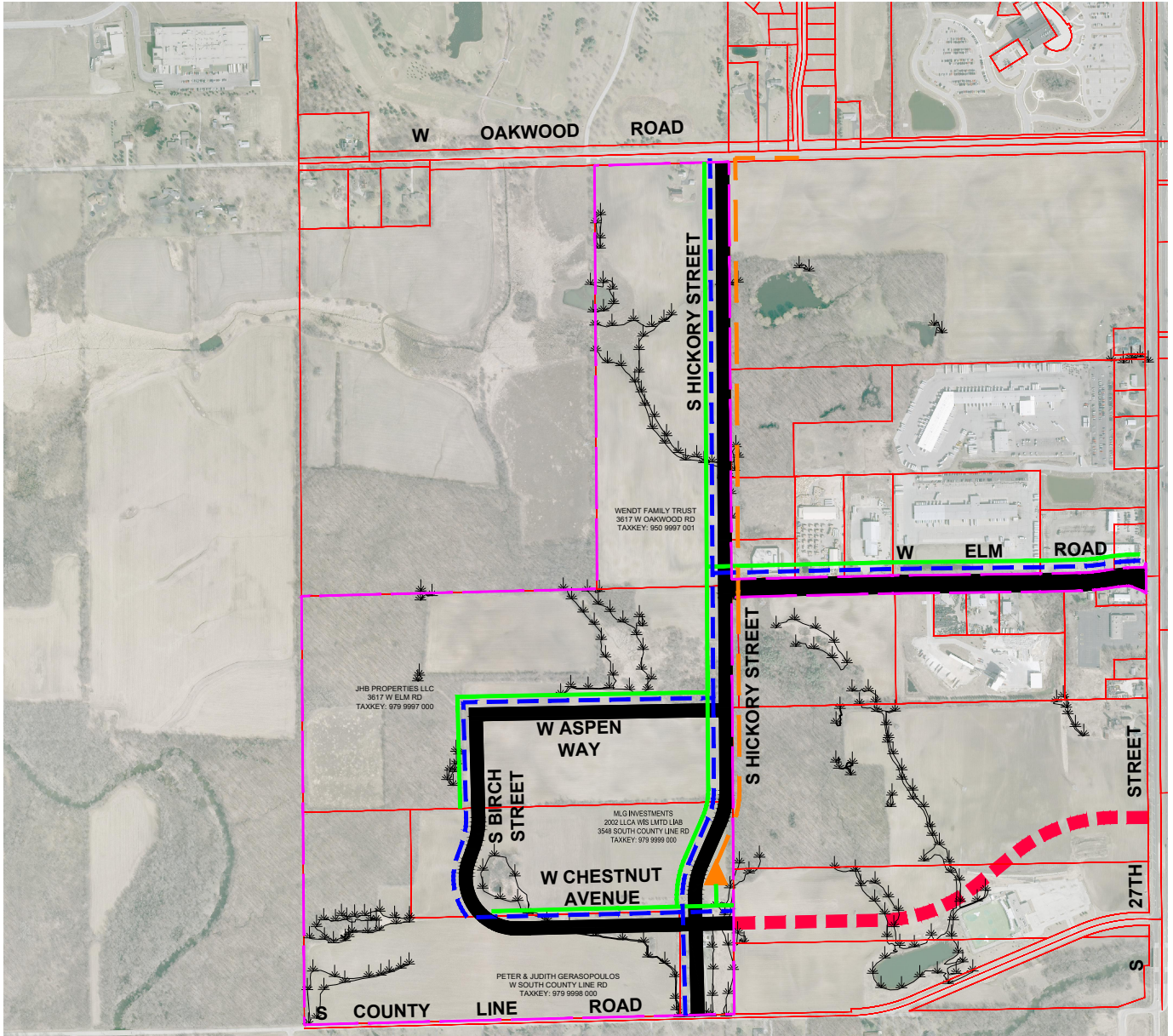


# REVISED EXHIBIT A

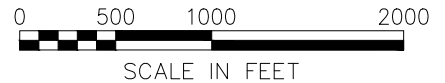
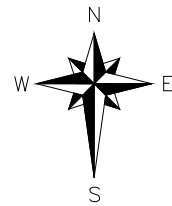
## PROPOSED REVISED CONCEPTUAL SANITARY SEWER, WATER MAIN, AND STREET LAYOUT

CITY OF FRANKLIN  
MILWAUKEE COUNTY, WISCONSIN



### LEGEND

- TASK ORDER #5 & 6 PROJECT LIMITS
- PROPOSED WATER MAIN
- PROPOSED SANITARY SEWER
- PROPOSED SANITARY FORCE MAIN
- PROPOSED SEWAGE PUMPING STATION
- PROPOSED STREET
- FUTURE STREETS (CONCEPTUAL)
- DELINEATED WETLANDS (NOT COMPLETE)



REVISED: NOVEMBER 21, 2019  
 REVISED: SEPTEMBER 24, 2019  
 REVISED: AUGUST 31, 2018  
 REVISED: JUNE 25, 2018  
 DATE: MAY 23, 2018

© 2019 Copyright Ruekert & Mielke, Inc.

SOURCE:  
 BASEMAP SOURCE: