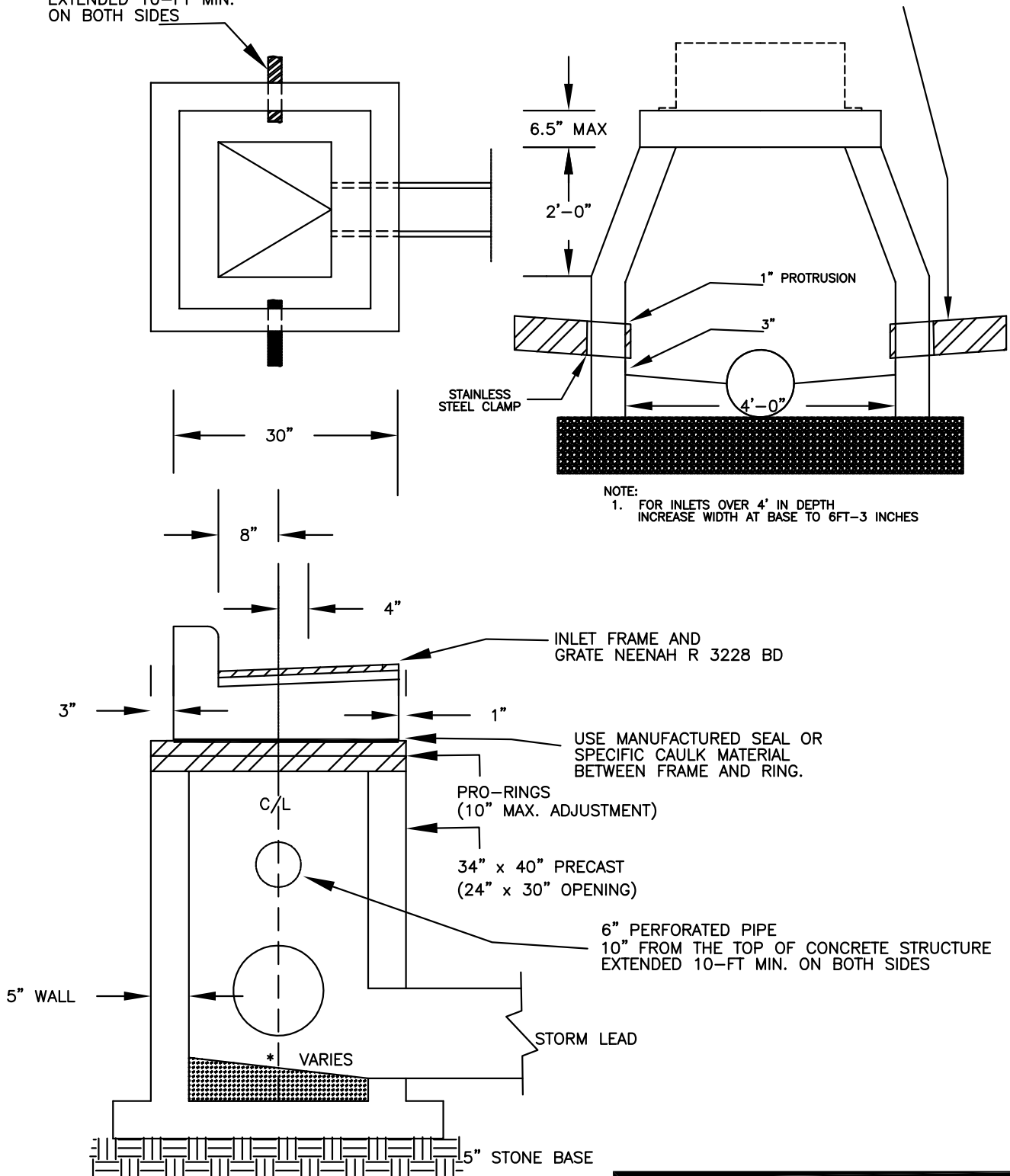


6" PERFORATED PIPE  
10" FROM THE TOP OF  
CONCRETE STRUCTURE  
EXTENDED 10-FT MIN.  
ON BOTH SIDES

6" PERFORATED PLASTIC PIPE  
WITH SOCKS OR APPROVED  
FABRIC AND END CAP  
(TYP)



NOTE:  
1. FOR INLETS OVER 4' IN DEPTH  
INCREASE WIDTH AT BASE TO 6FT-3 INCHES

INLET FRAME AND  
GRATE NEENAH R 3228 BD

USE MANUFACTURED SEAL OR  
SPECIFIC CAULK MATERIAL  
BETWEEN FRAME AND RING.

PRO-RINGS  
(10" MAX. ADJUSTMENT)

34" x 40" PRECAST  
(24" x 30" OPENING)

6" PERFORATED PIPE  
10" FROM THE TOP OF CONCRETE STRUCTURE  
EXTENDED 10-FT MIN. ON BOTH SIDES

STORM LEAD

1.5" STONE BASE

NOTE:  
1. EXCAVATION FOR INLETS SHALL EXTEND AT  
LEAST 18 INCHES BEYOND EXTERIOR OF  
STRUCTURE ON THREE SIDES.  
2. DRAIN OPENING SHALL BE MANUFACTURED OR  
FIELD CORED

**STORM SEWER INLET  
W/ DRAIN TILE DETAIL**

FRANKLIN  
ENGINEERING DEPT 10/2020 RA

FIGURE 16